



Data Model WG Plenary summary

Nara , December 11, 2010

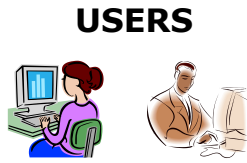
M.Louys, J. Salgado

Observation Data model Core Components

- Finalise working draft before Dec 24 this year
 - Doug , Alberto, Daniel to review and update current draft
- Finalise a Note on Obs/TAP service implementations 15 January 2011
- Estimation of data model uptake (AM)
(nb of data model fields , use-cases supported)
Jan 2011 proposed to WG discussion
Feb 2011 RFC period start
Mar 2011 TCG RFC

Photometry metadata in the VO

- Convergence for a general model to support SED builder requirements and photometry services (filter profile, catalog photometry metadata)
 - Agreement for an SED data model that re-uses Spectrum DM 1.2
 - Extension of Spectrum DM in order to cover time series
 - Updates asked for SDM/SSA consistency
- Photometry DM 1.0, WD (JS, editor) 15 Jan 2011
- SED DM 1.0, WD (JMcD, editor) 01 Feb 2011
- Spectrum DM 1.1 minor corrections vs SSA
- Spectrum DM 1.2 , 01 Feb 2011



COMPUTERS

REC

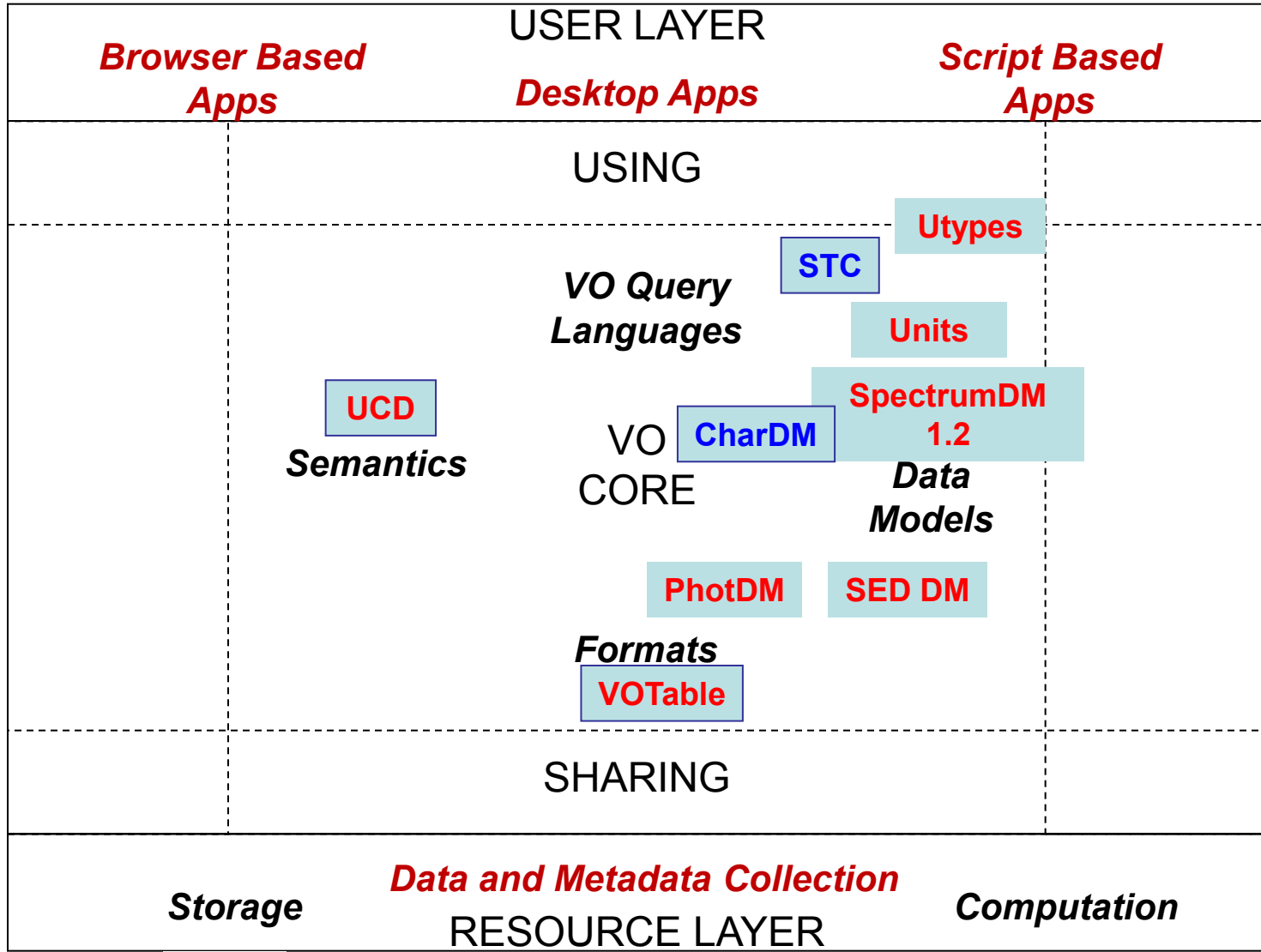
InProgress

REC used

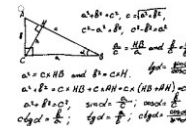
Std to be updated or created

R
E
G
I
S
T
R
Y

D
A
T
A
A
C
C
E
S
S



PROVIDERS



Data model for simulations

- Documents to be reviewed in DM WG
 - IVOA Implementation Note (several reference implementations)
 - On line documentation describing each piece of the model
- Iterations until end of Dec 2010
- start RFC in Jan 2011
TCG RFC in Feb 2011
PR in March 2011
REC in April 2011 (before Napoli Interop) ?

DM building blocks

- **Utypes** syntax clarified (JMcD,SD, MG, ML)
- Iterations for revision/update of [WD-Utypes-0.4-20091107.pdf](#) to start
- New WD by end of March 2011
- **Units** → general topic moved to the Semantic WG
- Recap of last draft to circulate on interop list
- Comments from all WG required

- **Characterisation 2.0**

- A new WD to be issued before Dec 24, 2010
- Develops the level 4 of Characterisation with sensitivity maps and access to external resources like filter response

- **Polarimetric data**

- feedback for data modeling
- suggestion to data providers /scientists to iterate on a short document for requirements