

Chandra X-Ray data in the Virtual Observatory

The Chandra X-ray Observatory has nearly 20 years of public data in its archive. Chandra data is easily accessible to the scientific community through VO-enabled services and interfaces.

cxc.harvard.edu



International Virtual Observatory Alliance

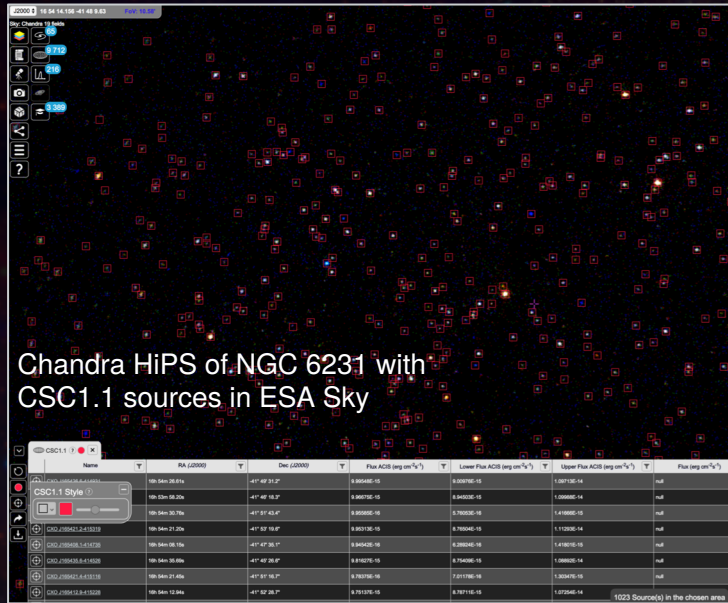
CHANDRA
X-RAY OBSERVATORY



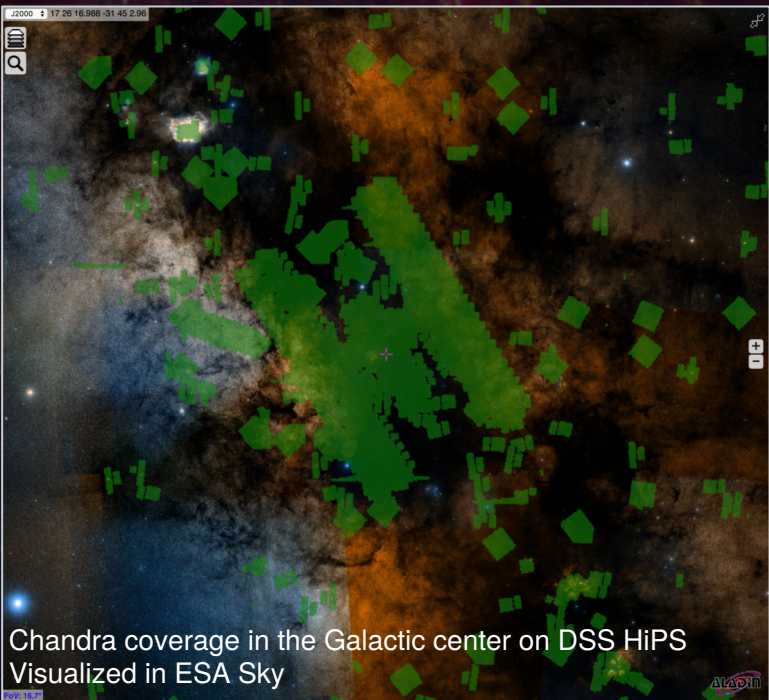
Image credit: X-ray: NASA/CXC/UMass/D. Wang et al.; Optical: NASA/ESA/STScI/D. Wang et al.; IR: NASA/JPL-Caltech/SSC/S. Stolovy

Access Chandra X-ray data through Virtual Observatory Services & Interfaces

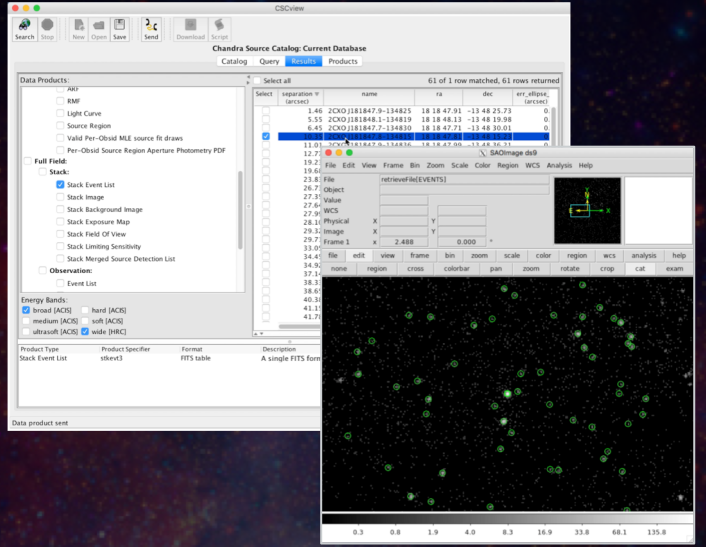
Chandra Hierarchical Progressive Survey (HiPS)
Visualize sky regions with source overlays as you zoom in/out



HEALPix Multi-Order Coverage maps (MOCs)
Find sky regions that have been observed by Chandra



VO-enabled archive interfaces: ChaSeR & CSCview
Discovery, Query & Access Chandra data through VO interfaces
VO: ADQL, VOTable, SAMP



- Access Chandra data from other VO tools and services with:
- Simple Cone Search
 - Simple Image Access (SIAP)
 - Table Access Protocol (TAP)

More Chandra VO



bit.ly/cxc-iau30



International Virtual Observatory Alliance



Image credit: X-ray: NASA/CXC/UMass/D. Wang et al.; Optical: NASA/ESA/STScI/D. Wang et al.; IR: NASA/JPL-Caltech/SSC/S. Stolovy