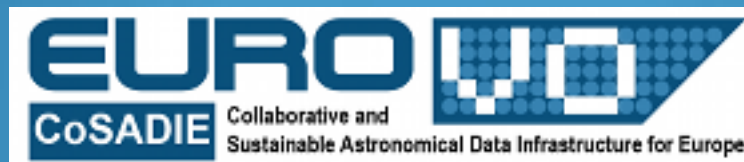


DataLink prototype for the GTC Archive

J. Manuel Alacid, Enrique Solano

Spanish Virtual Observatory
Centro de Astrobiología (INTA-CSIC)





DataLink for GTC Archive



GTC is the largest telescope in the world (10.4m segmented primary mirror) in the optical-infrared regime.

It is located in the Observatorio del Roque de los Muchachos (La Palma, Spain) and started scientific operations in the Spring of 2009.



GTC has two Day One instruments: OSIRIS (an optical camera and multi-object spectrograph) and CANARICAM, a thermal infrared camera and spectrograph with polarimetry and coronagraphy capabilities.



DataLink for GTC Archive



<http://gtc.sdc.cab.inta-csic.es/gtc>



The Gran Telescopio CANARIAS Archive
This data server provides access to the GTC Archive. The Gran Telescopio CANARIAS (GTC) is a 10.4m telescope with a segmented primary mirror. It is located in one of the top astronomical sites in the Northern Hemisphere: the Observatorio del Roque de las Muchachos (ORM, La Palma, Canary Islands). The GTC is a Spanish initiative led by the Instituto de Astrofísica de Canarias (IAC). The project also includes the participation of Mexico (Instituto de Astronomía de la Universidad Nacional Autónoma de México (IA-UNAM)) and Instituto Nacional de Astrofísica, Óptica y Electrónica (INAOE) and the US (University of Florida (UFL)). The project is actively supported by the Spanish Government and the Local Government from the Canary Islands through the European Funds for Regional Development (FEDER) provided by the European Union.

- Resources
- Archive search and data retrieval
 - Upload reduced data
 - Change your password
 - News
 - System Overview
 - Frequently Asked Questions
 - Help Desk (gtc-support@cab.inta-csic.es)
 - Private zone

The GTC Archive is the result of a collaboration agreement between INTA and GRANITECAN. It has been developed in the framework of the Spanish Virtual Observatory project supported by the Spanish MICINN through grant AYA 2008-02156. The system is maintained by the Data Archive Unit of the CAB (CSIC-INTA).
If you use this service in your research, please include the following acknowledgement in any resulting publications:
Based on data from the GTC Archive at CAB (INTA-CSIC).



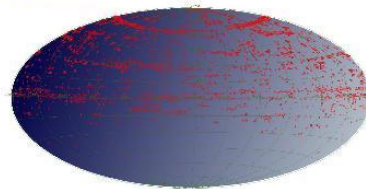
DataLink for GTC Archive



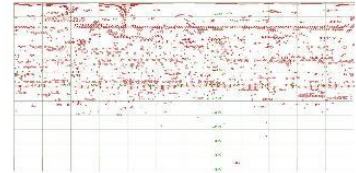
This data server provides access to the GTC Archive. The **Gran Telescopio CANARIAS** telescope with a segmented primary mirror. It is located in one of the top astronomical Hemispheres: the Observatorio del Roque de los Muchachos (ORM, La Palma, Canary Islands). The project also is a Spanish initiative led by the Instituto de Astrofísica de Canarias (IAC). The project also is supported by the Instituto de Astronomía de la Universidad Nacional Autónoma de México (INAOE) and the US (University of Florida) actively supported by the Spanish Government and the Local Government from the Canary Islands. The project is funded by the European Union.

GTC Archive: Search Form

GTC footprint MOC:



Aitoff (click to see an enlarged view)



Cartesian (click to see an enlarged view)

View MOC in Aladin (use Beta version of Aladin)
Download MOC

Target Information:

Object List:

Examples (coordinates in J2000):
64.99061 52.98401
4 19 57.75 +52 59 02.436
4:19:57.75 +52:59:02.436
ULAS J135058.86+081506.8

Search radius: arcmin



Resources

- ▶ Archive search and data retrieval
- ▶ Upload reduced data
- ▶ Change your password
- ▶ News
- ▶ System Overview
- ▶ Frequently Asked Questions
- ▶ Help Desk (gtc-support@cab.inta-csic.es)
- ▶ Private zone

The GTC Archive is the result of a collaboration agreement between INTA and GRAN developed in the framework of the Spanish Virtual Observatory project supported by INTA through grant AYA 2008-02156. The system is maintained by the Data Archive Unit of INTA.

If you use this service in your research, please include the following acknowledgement in any resulting publications:
"Based on data from the GTC Archive at CAB (INTA-CSIC)".



DataLink for GTC Archive




GTC Archive




Login Not logged in

4652 Products found matching your criteria

Download selected in **zip** format

Page 1 of 466 [Next »](#) [New Search](#)

Prod ID	Program ID	O.Block	RA (deg) J2000	DEC (deg) J2000	Instr.	Obs. Mode	Init.Time	End Time	Airmass	Priority	ADS	View	Fetch	Header	Preview	Fetch	View	Fetch
218830	GTC24-12A	0004	242.27080	-22.49998	OSIRIS	BBI	2012-05-30 02:24:33.5	2012-05-30 02:25:34.0	1.79	1	ADS	View	Fetch	Header	Preview	Fetch	View	Fetch
218829	GTC24-12A	0004	242.27081	-22.49998	OSIRIS	BBI	2012-05-30 02:23:09.7	2012-05-30 02:24:10.2	1.79	1	ADS	View	Fetch	Header	Preview	Fetch	View	Fetch
218828	GTC24-12A	0004	242.27083	-22.49998	OSIRIS	BBI	2012-05-30 02:21:46.0	2012-05-30 02:22:46.5	1.78	1	ADS	View	Fetch	Header	Preview	Fetch	View	Fetch
218827	GTC24-12A	0004	242.27508	-22.49999	OSIRIS	BBI	2012-05-30 02:18:23.5	2012-05-30 02:19:24.0	1.76	1	ADS	View	Fetch	Header	Preview	Fetch	View	Fetch
218826	GTC24-12A	0004	242.27509	-22.50000	OSIRIS	BBI	2012-05-30 02:16:59.8	2012-05-30 02:18:00.3	1.76	1	ADS	View	Fetch	Header	Preview	Fetch	View	Fetch
218825	GTC24-12A	0004	242.27508	-22.50006	OSIRIS	BBI	2012-05-30 02:15:36.2	2012-05-30 02:16:36.7	1.75	1	ADS	View	Fetch	Header	Preview	Fetch	View	Fetch
218824	GTC24-12A	0004	242.27496	-22.50000	OSIRIS	BBI	2012-05-30 02:10:02.6	2012-05-30 02:11:03.1	1.73	1	ADS	View	Fetch	Header	Preview	Fetch	View	Fetch
218823	GTC24-12A	0004	242.27709	-22.49998	OSIRIS	BBI	2012-05-30 02:08:28.7	2012-05-30 02:09:29.2	1.73	1	ADS	View	Fetch	Header	Preview	Fetch	View	Fetch
218822	GTC24-12A	0004	242.27729	-22.50006	OSIRIS	BBI	2012-05-30 02:07:05.0	2012-05-30 02:08:05.4	1.72	1	ADS	View	Fetch	Header	Preview	Fetch	View	Fetch
218821	GTC24-12A	0004	242.27712	-22.50000	OSIRIS	BBI	2012-05-30 02:05:41.2	2012-05-30 02:06:41.7	1.72	1	ADS	View	Fetch	Header	Preview	Fetch	View	Fetch

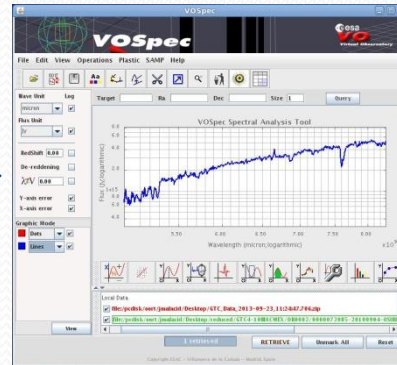
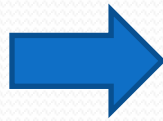
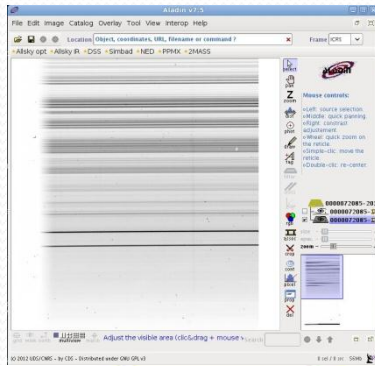
Link to Calibration files

Link to Raw Data

Link to Reduced Data



DataLink for GTC Archive



	Raw files	Reduced files	Calibration files
OSIRIS	38337	4652	60942
CANARICAM	85	85	24
TOTAL	38422	4737	60966

12,15 %

Total publications	Accepted	Reject	In progress
55	23	13	19

76% accepted



DataLink for GTC Archive



```
- <VOTABLE version="1.2" xsi:schemaLocation="http://www.ivoa.net/xml/VOTable/v1.2 http://www.ivoa.net/xml/VOTable/v1.2">
```

```
- <RESOURCE type="results">
```

```
  <DESCRIPTION>GTC Simple Image Access Service</DESCRIPTION>
```

```
  <INFO name="QUERY STATUS" value="OK"/>
```

```
  + <PARAM name="INPUT:POS" value="242.2708,-22.4999" datatype="double"></PARAM>
```

```
  + <PARAM name="INPUT:SIZE" value="10.0" datatype="double"></PARAM>
```

```
  + <PARAM name="INPUT:OBS_ID" value="" utype="sia:dataid.obsid" datatype="char" arraysize="*" ucd="OBS_ID"></PARAM>
```

```
  + <PARAM name="INPUT:FORMAT" value="ALL" datatype="char" arraysize="*"></PARAM>
```

```
  + <PARAM name="INPUT:INTERSECT" value="OVERLAPS" datatype="char" arraysize="*"></PARAM>
```

```
  + <PARAM name="INPUT:VERB" value="1" datatype="int"></PARAM>
```

```
  + <PARAM name="INPUT:TELESCOPE" datatype="char" arraysize="*" value="GTC"></PARAM>
```

```
  + <PARAM name="INPUT:INSTRUMENT" datatype="char" arraysize="*" value="ALL"></PARAM>
```

```
- <TABLE>
```

```
  <DESCRIPTION> Result showed in VOTable format. </DESCRIPTION>
```

```
  + <FIELD name="Title" utype="sia:dataid.title" ucd="VOX:Image_Title" datatype="char" arraysize="*"></FIELD>
```

```
  + <FIELD name="Observation_ID" utype="sia:dataid.obsid" ucd="OBS_ID" datatype="char" arraysize="*"></FIELD>
```

```
  + <FIELD name="Reference" utype="sia:access.reference" ucd="VOX:Image_AccessReference" datatype="char" arraysize="*"></FIELD>
```

```
  + <FIELD name="Format" utype="sia:access.format" datatype="char" arraysize="*" ucd="VOX:Image_Format"></FIELD>
```

```
  + <FIELD name="RA" utype="sia:char.spatialaxis.coverage.location.value.ra" ucd="POS_EQ_RA_MAIN" unit="deg" datatype="double"></FIELD>
```

```
  + <FIELD name="Dec" utype="sia:char.spatialaxis.coverage.location.value.dec" ucd="POS_EQ_DEC_MAIN" unit="deg" datatype="double"></FIELD>
```

```
  + <FIELD name="Telescope" utype="sia:dataid.telescope" ucd="instr.tel" datatype="char" arraysize="*"></FIELD>
```

```
  + <FIELD name="Instrument" utype="sia:dataid.instrument" ucd="INST_ID" datatype="char" arraysize="*"></FIELD>
```

```
  + <FIELD name="Naxes" utype="sia:image.naxes" ucd="VOX:Image_Naxes" datatype="int" arraysize="*"></FIELD>
```

```
  + <FIELD name="Naxis" utype="sia:image.naxis" ucd="VOX:Image_Naxis" datatype="int" arraysize="*"></FIELD>
```

```
  + <FIELD name="Scale" utype="sia:image.scale" ucd="VOX:Image_Scale" datatype="double"></FIELD>
```

```
- <DATA>
```

```
- <TABLEDATA>
```

```
- <TR>
```

```
  <TD>GTC Image 4653</TD>
```

```
  <TD>4653</TD>
```

```
- <TD>
```

```
  http://gtc.sdc.cab.inta-csic.es:80/gtc/siap/dataLinkGTC.jsp?uri=4653
```

```
</TD>
```

```
  <TD>application/xml+votable</TD>
```

```
  <TD>242.60645</TD>
```

```
  <TD>-22.54367</TD>
```

```
  <TD>GTC</TD>
```

```
  <TD>OSI</TD>
```

```
  <TD>N/A</TD>
```

```
  <TD>N/A</TD>
```

```
  <TD>N/A</TD>
```

```
</TR>
```

```
- <TR>
```

```
  <TD>GTC Image 4655</TD>
```

SIAP

Access to DataLink



DataLink for GTC Archive



```
-<VOTABLE version="1.2" xsi:schemaLocation="http://www.ivoa.net/xml/VOTable/v1.2 http://www.ivoa.net/xml/VOTable/v1.2">
- <RESOURCE type="results">
  <DESCRIPTION>GTC DataLink Service</DESCRIPTION>
  <INFO name="QUERY_STATUS" value="OK"/>
  <TABLE name="DataLinks">
    <DESCRIPTION> Result showed in VOTable format. </DESCRIPTION>
    <FIELD name="publisher_did" utype="dl:Dataid.ObservationID" ucd="meta.ref.url;meta.curation" datatype="char" arraysize="*">
      <DESCRIPTION> Identifier of the observation </DESCRIPTION>
    </FIELD>
    <FIELD name="identifier" utype="dl:Semantics" ucd="" datatype="char" arraysize="*">
      <DESCRIPTION> Name of the link </DESCRIPTION>
    </FIELD>
    <FIELD name="servicetype" utype="dl:Votype" ucd="" datatype="char" arraysize="*">
      <DESCRIPTION> Type of the service </DESCRIPTION>
    </FIELD>
    <FIELD name="format" utype="dl:Access.Format" ucd="meta.id" datatype="char" arraysize="*">
      <DESCRIPTION> Format </DESCRIPTION>
    </FIELD>
    <FIELD name="size" utype="dl:Access.Size" ucd="phys.meta;meta.file" datatype="integer" arraysize="">
      <DESCRIPTION> Estimate size of the response </DESCRIPTION>
    </FIELD>
    <FIELD name="access" utype="dl:Access.Reference" ucd="meta.ref.url" datatype="char" arraysize="*">
      <DESCRIPTION> URL returning the content of the targeted link </DESCRIPTION>
    </FIELD>
    <FIELD name="description" utype="" ucd="meta.note" datatype="char" arraysize="*">
      <DESCRIPTION> Description of the service </DESCRIPTION>
    </FIELD>
  </TABLE>
  <DATA>
    <TABLEDATA>
      <TR>
        <TD>
          "http://gtc.sdc.cab.inta-csic.es:80/gtc/siap/gtc_siap.jsp?obs_id=4653"
        </TD>
        <TD> Reduced Data 4653</TD>
        <TD> DAL:SIA</TD>
        <TD> image/fits</TD>
        <TD> 7248960</TD>
      </TR>
      <TR>
        <TD>
          "http://gtc.sdc.cab.inta-csic.es:80/gtc/servlet/FetchProd?pred_id=4653"
        </TD>
        <TD> Reduced Data </TD>
      </TR>
    </TABLEDATA>
  </DATA>
</RESOURCE>
</VOTABLE>
```

DataLink



DataLink for GTC Archive



```
-<VOTABLE version="1.2" xsi:schemaLocation="http://www.ivoa.net/xml/VOTable/v1.2 http://www.ivoa.net/xml/VOTable/v1.2">
- <RESOURCE type="results">
  <DESCRIPTION>GTC DataLink Service</DESCRIPTION>
  <INFO name="QUERY_STATUS" value="OK"/>
- <TABLE name="DataLinks">
  <DESCRIPTION> Result showed in VOTable format. </DESCRIPTION>
- <FIELD name="publisher_id" utype="dl:Dataid.ObservationID" ucd="meta.ref.url;meta.curation" datatype="char" arraysize="*">
  <DESCRIPTION> Identifier of the observation </DESCRIPTION>
  </FIELD>
- <FIELD name="identifier" utype="dl:Semantics" ucd="" datatype="char" arraysize="*">
  <DESCRIPTION> Name of the link </DESCRIPTION>
  </FIELD>
- <FIELD name="servicetype" utype="dl:Votype" ucd="" datatype="char" arraysize="*">
  <DESCRIPTION> Type of the service </DESCRIPTION>
  </FIELD>
- <FIELD name="format" utype="dl:Access.Format" ucd="meta.id" datatype="char" arraysize="*">
  <DESCRIPTION> Format </DESCRIPTION>
  </FIELD>
- <FIELD name="size" utype="dl:Access.Size" ucd="phys.meta;meta.file" datatype="integer" arraysize="">
  <DESCRIPTION> Estimate size of the response </DESCRIPTION>
  </FIELD>
- <FIELD name="access" utype="dl:Access.Reference" ucd="meta.ref.url" datatype="char" arraysize="*">
  <DESCRIPTION> URL returning the content of the targeted link </DESCRIPTION>
  </FIELD>
- <FIELD name="description" utype="" ucd="meta.note" datatype="char" arraysize="*">
  <DESCRIPTION> Description of the service </DESCRIPTION>
  </FIELD>
```



DataLink for GTC Archive



TOPCAT

File Views Graphics Joins Windows Interop Help

Table List
1: dataLinkGTC.jsp.xml

Current Table Properties

Label: dataLinkGTC.jsp.xml
Location: /pdisk/oort/jmalacid/Desktop/dataLinkGTC.jsp.xml
Name: DataLinks
Rows: 20
Columns: 7
Sort Order: ↑
Row Subset: All
Activation Action: (no action)

Link to Reduced data

Link to ADS

Link to Raw data

Link to Calibration data

TOPCAT(1): Table Browser

File Subsets Help

Table Browser for 1: dataLinkGTC.jsp.xml

	publisher_did	identifier	servicety...	format	size	access	description
1	"http://gtc.sdc.ca...	Reduced Data 4653	DAL:SI	image/fits	(7248960)	"http://gtc.sdc.cab.inta-csic.es:80/gtc/servlet/FetchPr...	Reduced Data
2	"http://gtc.sdc.ca...	ADS Journal	n/a	webservice	(n/a)	"http://adsabs.harvard.edu/abs/2012MNRAS.430.17...	Link to the related ADS Journal
3	"http://gtc.sdc.ca...	Raw Data	DAL:SI	image/fits	(6885512)	"http://gtc.sdc.cab.inta-csic.es:80/gtc/servlet/FetchPr...	Product 218790, program: GTC24-12A, observing blo...
4	"http://gtc.sdc.ca...	Calibration Data	DAL:SI	archive/tar	(n/a)	"http://gtc.sdc.cab.inta-csic.es:80/gtc/jsp/fetchDataBl...	Calibration data related to the product 218790, progr...
5	"http://gtc.sdc.ca...	Raw Data	DAL:SI	image/fits	(6880852)	"http://gtc.sdc.cab.inta-csic.es:80/gtc/servlet/FetchPr...	Product 218789, program: GTC24-12A, observing blo...
6	"http://gtc.sdc.ca...	Calibration Data	DAL:SI	archive/tar	(n/a)	"http://gtc.sdc.cab.inta-csic.es:80/gtc/jsp/fetchDataBl...	Calibration data related to the product 218789, progr...
7	"http://gtc.sdc.ca...	Raw Data	DAL:SI	image/fits	(6900733)	"http://gtc.sdc.cab.inta-csic.es:80/gtc/servlet/FetchPr...	Product 218788, program: GTC24-12A, observing blo...
8	"http://gtc.sdc.ca...	Calibration Data	DAL:SI	archive/tar	(n/a)	"http://gtc.sdc.cab.inta-csic.es:80/gtc/jsp/fetchDataBl...	Calibration data related to the product 218788, progr...
9	"http://gtc.sdc.ca...	Raw Data	DAL:SI	image/fits	(6911573)	"http://gtc.sdc.cab.inta-csic.es:80/gtc/servlet/FetchPr...	Product 218787, program: GTC24-12A, observing blo...
10	"http://gtc.sdc.ca...	Calibration Data	DAL:SI	archive/tar	(n/a)	"http://gtc.sdc.cab.inta-csic.es:80/gtc/jsp/fetchDataBl...	Calibration data related to the product 218787, progr...
11	"http://gtc.sdc.ca...	Raw Data	DAL:SI	image/fits	(6921054)	"http://gtc.sdc.cab.inta-csic.es:80/gtc/servlet/FetchPr...	Product 218786, program: GTC24-12A, observing blo...



DataLink for GTC Archive



Thank you