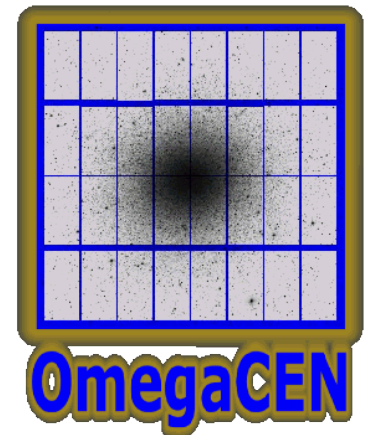


# Query Driven Visualization over SAMP

IVOA InterOp 2014b  
**Hugo Buddelmeijer**

OmegaCEN / KiDS  
Kapteyn Astronomical Institute  
University of Groningen, NL



Collaborators: Edwin Valentijn, Jos Roerdink,  
Milena Ivanova, David Williams, Parisa Noorishad



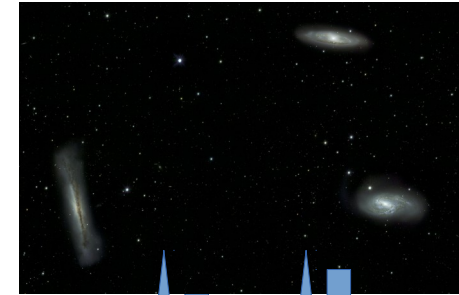
university of  
 groningen

netherlands

eScience center

# Visualization of Big Data

PBs



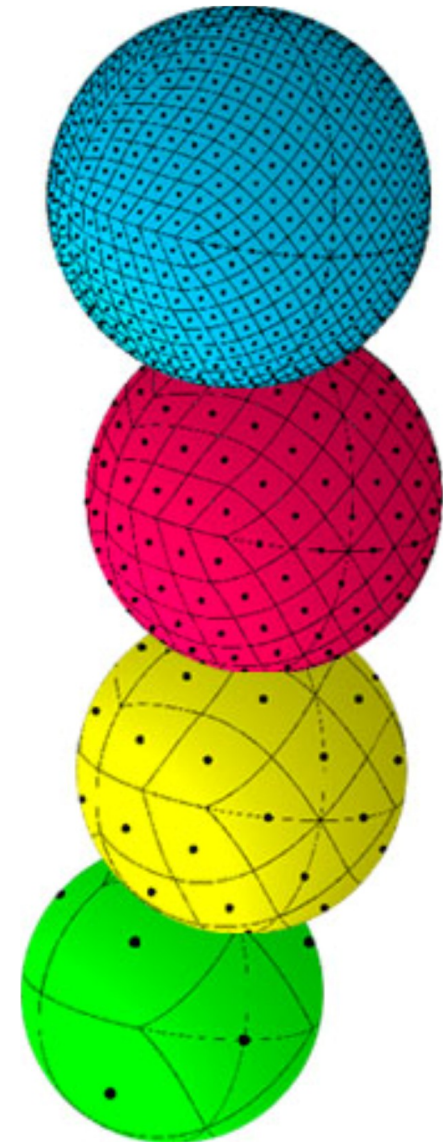
1:1000000000

MBs



# Request-Driven Analysis

- Aladin HiPS(^3)
  - Images & Catalogs,
  - Just Spatial Partition
- DataLink / AccessData (2.0)
  - Anything is possible?
- SAMP Demo
  - Experimental MTypes
  - Catalogs only
  - any Region of Interest



# Living Data

- No difference between requesting existing data or new data
- because data can create itself if necessary.
- So only request what you actually need!



# Pulling over SAMP

- Original:
  - table.load.votable
- Split into:
  - Find (& Instantiate)
  - Info
  - Highlight
  - Pull (& Process)
  - Push

