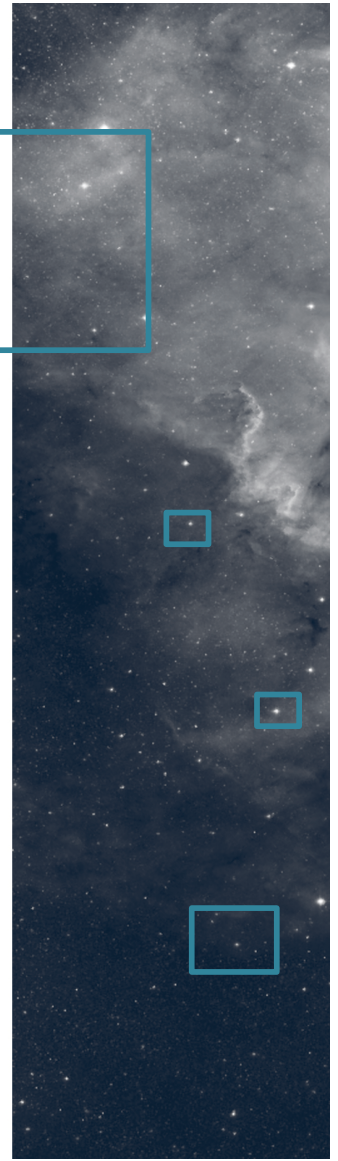
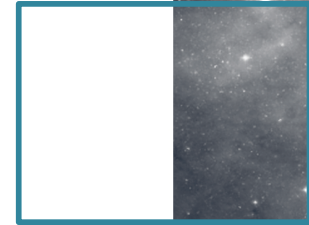


# AI in querying of astronomical data services

IVOA May 2023, Bologna

KDIG Session, Tuesday 9 May 2023

André Schaaff, CDS



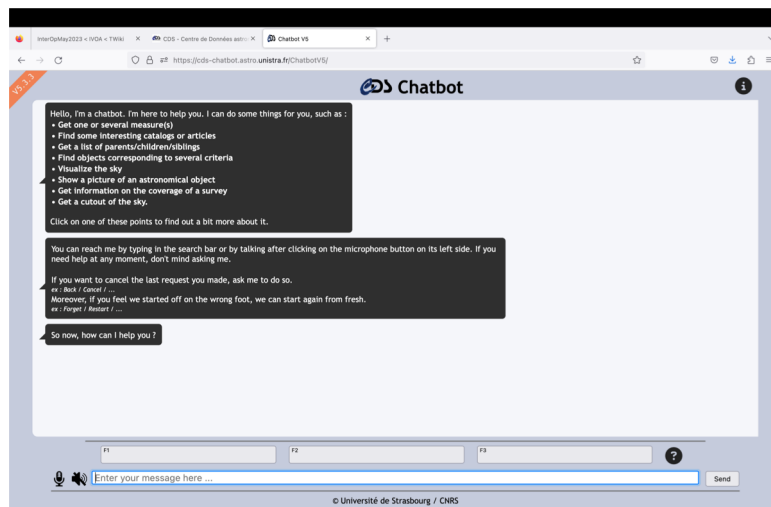


## □ Purpose

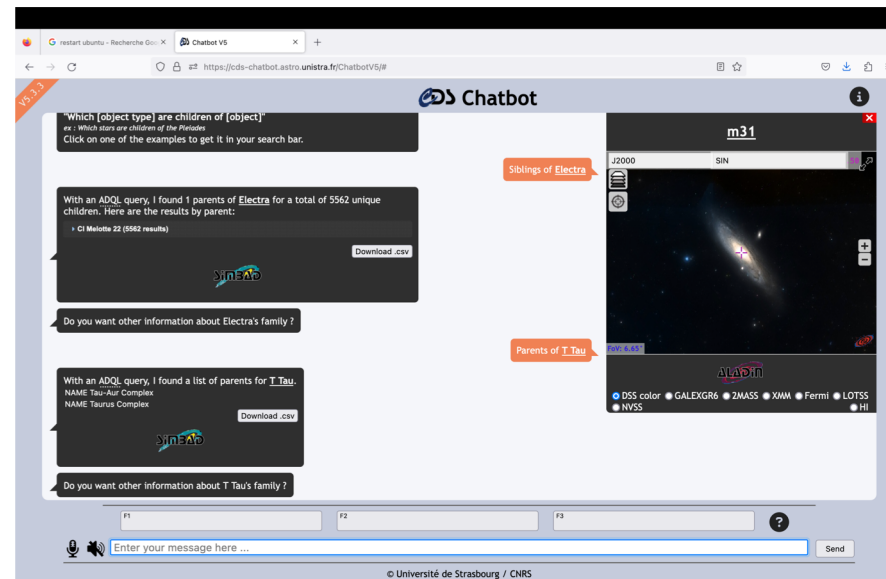
- In the context of astronomical data services querying and user interfaces.
- Reminder about CDS Chatbot and comments.
- hot topic of the moment, ChatGPT (and similars) impact, questions
- Other investigations

# CDS Chatbot reminder

- Presented at several times: IVOA, astroinformatics, ADASS (with S. derriere, T. Boch and several students)
- Initially based on Dialogflow and now Rasa



9/05/20233



IVOA May 2023, Bologna

## □ CDS Chatbot, comments

- AI is in the conversation capabilities (based on Rasa ML) to detect the user intents (a measure ?, a table ?, an object name ?, etc.)
- Close link with CDS services
  - an intent is transformed into a query (based on IVOA protocols) to the services
  - the result is formatted (text, list of items, link(s), displayed in a widget (Aladin Lite, Photometry viewer, ...)
  - context limited to the last queries

## □ CDS Chatbot, comments (2)

- It is now possible to integrate chatGPT into a Rasa chatbot as Rasa framework was enhanced recently with new capabilities around Large Language Models
- Rasa business model has also evolved...
- Pay-as-you-use with a monthly bill is not always possible
- Support to Community Edition is decreasing

## □ ChatGPT impact ?, questions

- Which effort to use ChatGPT with Rasa ?
- Which effort (especially concerning the customization) to generate (maybe) a new chatbot from scratch with chatGPT ?
- Cost of ChatGPT upgrading ? New generation and re-customization ?
- Uncertain future
  - Technical and commercial evolutions
  - It could be forbidden (or restricted) in some countries...

## □ Other investigations

- We have probably all Alexa, OK Google, Siri, ..., Embedded in our smartphone, laptop, car, or a dedicated device in the living room, kitchen, etc. => common and no real additional cost, nothing to pay to use it !
- These tools are useful to
  - react to commands
  - answer to questions where the context understanding is not too specific.

## □ Other investigations (2)

- But it is possible to add voice interaction models, for example through new skills in the Alexa Ecosystem.
- A skill extending the assistant capabilities to the astronomy domain could be investigated.
- Comments...



## □ Conclusion

- Technological evolutions were always fast but now we have paradigm changes.
- Maybe still true: evaluation and investment if it brings a real benefit to the astronomers without being somewhere in a jail
  - From free to pay-as-you-use
  - Compatibility break after a framework major evolution
  - Etc.

