



Fig. 1

1. Datalink in the Browser

Markus Demleitner
 msdemlei@ari.uni-heidelberg.de

When your product is datalink, browsers may try to open them, giving your users VOTable in the browser.

That's not nice.

Fix it with XSLT and Javascript.

Showcase: <http://dc.g-vo.org/static/datalinks.shtml>

Note that the basic HTML table and the SODA parameters transforms presented here were written quite a while ago. What's new this time around is the vocabulary-based re-organisation into a tree; we can do this now because of tech provided by Vocabularies 2.

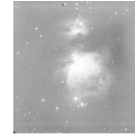
(cf. Fig. 1)

2. Basic feature

Turn VOTable into an HTML table and extract a preview:

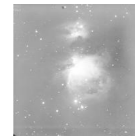
```
<VOTABLE>
<INFO name="QUERY_STATUS" value="OK"/>
<RESOURCE type="results">
<TABLE name="dlresponse">
  <FIELD ID="ID" arraysize="*"
  datatype="char" name="ID"
  ucd="meta.id;meta.main"/>
  ...
<DATA>
<TABLEDATA>
  <TR>
    <TD>ivo://org.gavo.dc/??...
    <TD>http://dc.zah.uni-he...
    <TD/>
    <TD/>
    <TD>1985-01-07 time seri...
```

(cf. Fig. 2)



Where?	Description	What?
Link (92 MIB)	1985-01-07 time series for this field.	#counterpart ivo://org.gavo.dc/~?flare_survey/data/;
Link (92 MIB)	1985-01-10 time series for this field.	#counterpart ivo://org.gavo.dc/~?flare_survey/data/;
Link (92 MIB)	1985-01-11 time series for this field.	#counterpart ivo://org.gavo.dc/~?flare_survey/data/;
Link (92 MIB)	1985-01-13 time series for this field.	#counterpart ivo://org.gavo.dc/~?flare_survey/data/;

Fig. 2



Where?	Description	What?
Link (92 MIB)	1985-01-07 time series for this field.	#counterpart ivo://org.gavo.dc/~?flare_survey/data/;
Link (92 MIB)	1985-01-10 time series for this field.	#counterpart ivo://org.gavo.dc/~?flare_survey/data/;
Link (92 MIB)	1985-01-11 time series for this field.	#counterpart ivo://org.gavo.dc/~?flare_survey/data/;
Link (92 MIB)	1985-01-13 time series for this field.	#counterpart ivo://org.gavo.dc/~?flare_survey/data/;

Fig. 3

3. Re-Order To Tree

That's done in Javascript using the datalink/core vocabulary, which gives the labels and descriptions:

(cf. Fig. 3)

(cf. Fig. 4)

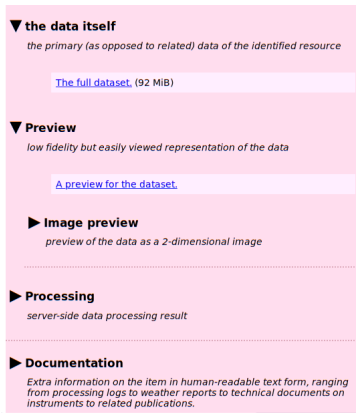


Fig. 4

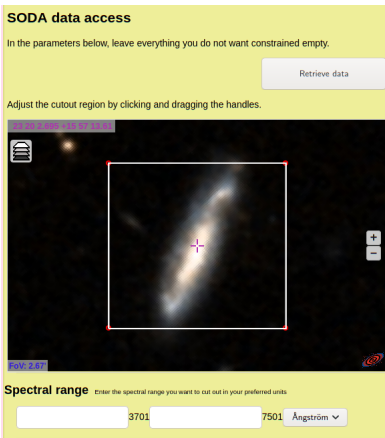


Fig. 5

4. Prettify SODA Parameters

Using Aladin Lite, let people enter cutouts graphically and spectral ranges in their preferred units:

(cf. Fig. 5)

5. DIY

To have this in your Datalink documents, add a PI at the top:

```
<?xml-stylesheet
  href='/static/xsl/datalink-to-html.xsl'
  type='text/xsl'?>
```

In reality (cross-origin request limitations), you need to arrange for the necessary files to be served from your server. Get them from <https://github.com/msdemlei/datalink-xslt>.

DaCHS, right now, still does server-side XSLT when it believes it is sending Datalink to a browser. That is because years ago browsers had some odd quirks when doing DOM operations on XSLT-transformed data. I *think* this is much less of a problem these days.

Thanks!

Screenshots in this talk from

Califa Datalink¹ and Mnster Flare Survey Datalink²

¹ <http://dc.g-vo.org/califa/q3/d1/dlmeta?ID=ivo%3A%2F%2Forg.gavo.dc%2F%3Fcalifa%2Fdatadr3%2FCOMB%2FUGC12519.COMB.rscube.fits>

² http://dc.g-vo.org/flare_survey/q/mdl/dlmeta?ID=ivo%3A//org.gavo.dc/~%3Fflare_survey/data/plates/ESO040_004362.fits