

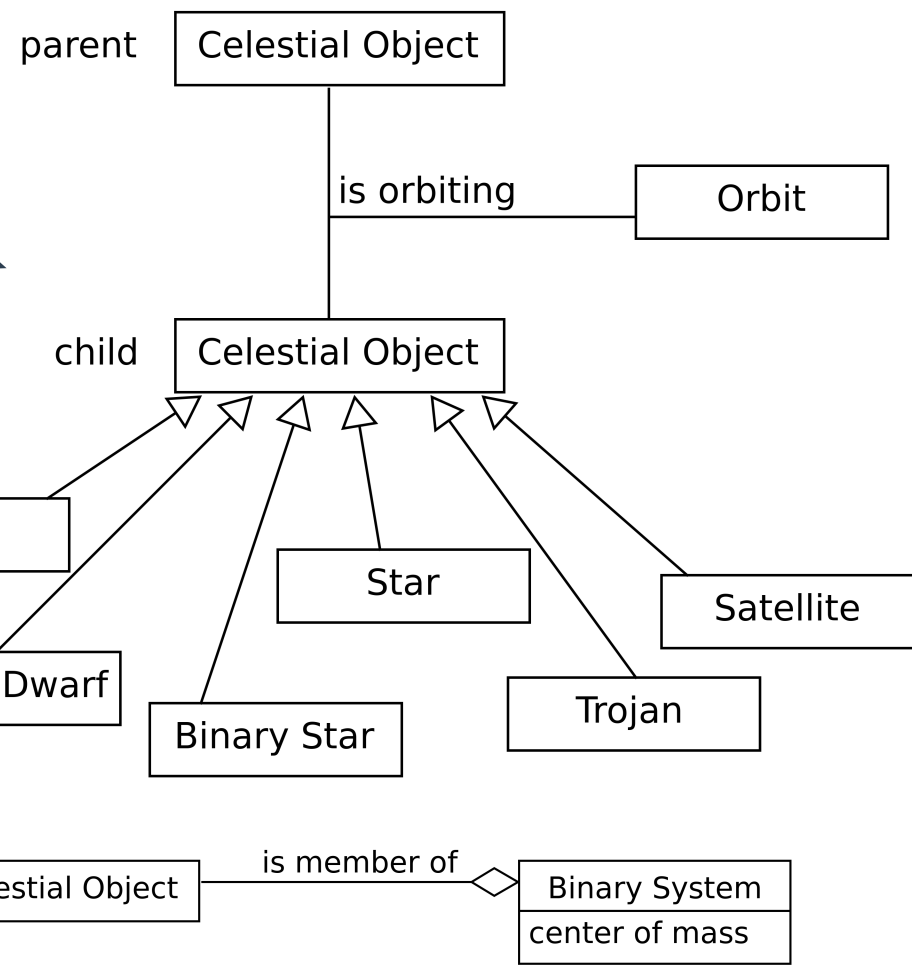
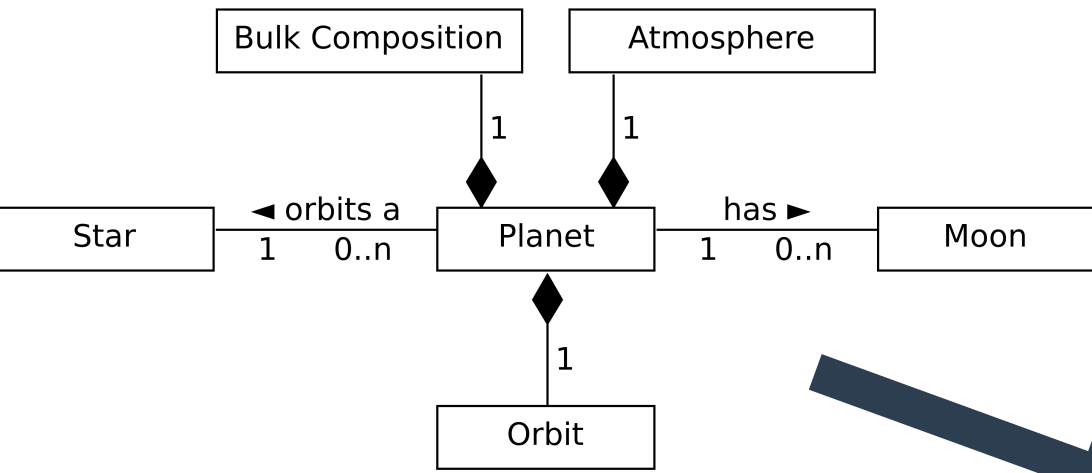
Exoplanetary Systems modelling & Structured/Morphologically complex objects catalog/source DM requirements

Marco Molinaro
INAF

**IWOA May 2019 Interoperability Meeting
Catalog/Sources Properties [DM] Focused
Session May 16 2019 – 9:00-10:30**



Exoplanetary Systems DM attempt



- Stellar Host details
- Planet as a source
- Orbit modelling

Exoplanetary Systems DM requirements

- **Sources at two/three levels**

- Stellar components
- Planets
- The stellar system
 - Combination of the two



RA, Dec & name
primary identification of a system and its components
(stellar_id + planet_letter)

- **Specific details to properly characterize the stellar host**

- Spectral type, physical parameters, activity indexes, host multiplicity
- Annotations for binary/multistar scenario would be an improvement
 - Currently available catalogues are dis-homogeneous

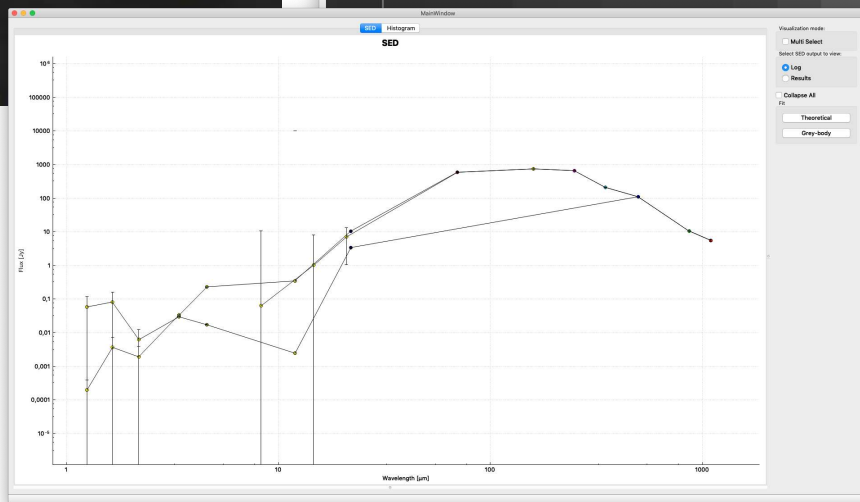
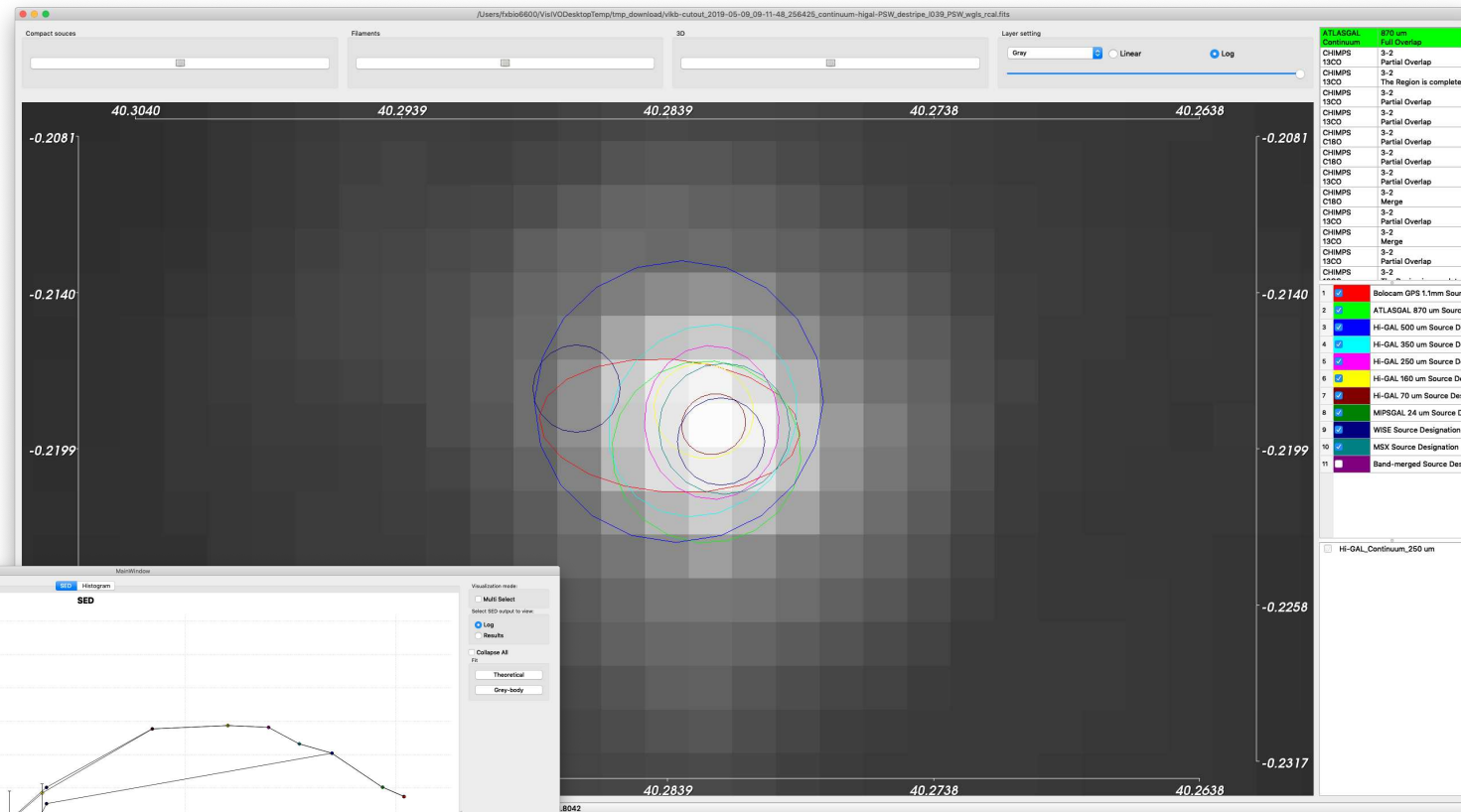
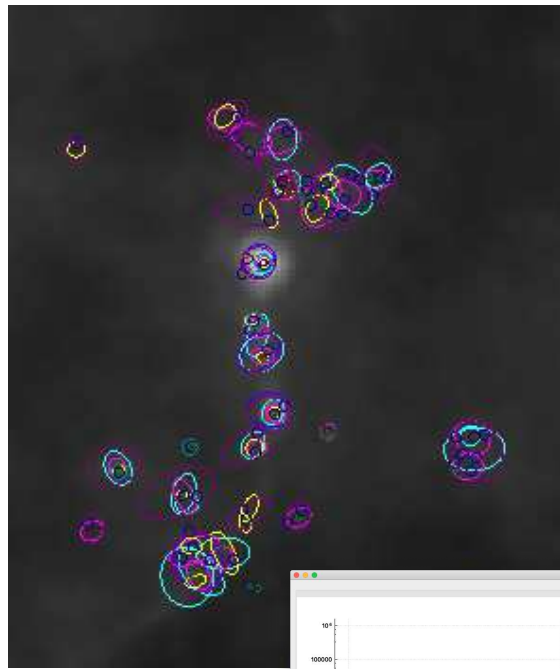
- **Planet (as a source): status level**

- Candidates, confirmed, rejected, ...
- Analogous in classification: is it a Jovian or a Brown Dwarf?
- Status and classification is curation but requires metadata/model to allow interoperability

- **Stellar system**

- Decomposition should be taken into account
- Matter for the exoplanets data model? (involves orbital details)

MW multi-band merged compact sources



Vitello et al. (<https://doi.org/10.1088/1538-3873/aac5d2>)

“Vialactea Visual Analytics Tool for Star Formation Studies of the Galactic Plane”

MW morphologically complex structures

