

RDA 11 Berlin

feedback

André Schaaff

Centre de Données astronomiques de Strasbourg

DCP Session

IVOA, Victoria, 28/05-01/06/2018



CENTRE DE DONNÉES
ASTRONOMIQUES DE STRASBOURG



H2020-Astronomy ESFRI and Research
Infrastructure Cluster (Grant Agreement number:
653477).

□ Purpose

- A summary of selected sessions of RDA Berlin, Plenary 11, March 2018

□ WG Provenance Patterns

- Nick Car, Geoscience Australia
 - A database of elementary use cases
 - General enough to be recognized in many situations
 - Various Provenance patterns have been designed for them
 - W3C based
 - Implemented in Prov-RDF in TripleStore
- Interest for IVOA provenance use cases and how we have re-used the W3C concepts and serialisation formats
- <https://www.rd-alliance.org/groups/provenance-patterns-wg>

□ WG Storage Service Definitions

- Works on a common vocabulary for the description of data storage services
 - machine readable
 - enough to describe both in-house storage services and various cloud storage
- We had “real world” examples
- Modern data model types (UML, DB Schema, Data exchange Schema, Semantic Web)
- Ontology for a Storage System Model + vocabularies for terms as needed
- <http://purl.org/storagesys>

□ BoF EOSC-related European Projects

- EOSC
 - Build a **European Open Science Cloud**
 - Offer a virtual environment for **storage, management, analysis** and **re-use** of **research data**
 - **Important** item for new European projects
 - Not build from scratch, EUDAT (B2Find service / IVOA Registry related in Sesto), EGI are core participants
 - First deadline, 2021

□ BoF EOSC-related European Projects (2)

- Aim of the session was to find **new topics for RDA**
 - Links with Data Usage Metrics WG (user statistics for data)
 - Link with Software Source Code IG as source code is also a product of Science, also PID IG
 - Link with Disciplinary Collaboration Framework IG to involve the community in the discussion
- Françoise attended the collocated event after RDA

□ IG Software Source Code

- Widely described during the Santiago DCP Session
- IG is interested in **source code** (and not applications / tools) linked to **data production and processing**
- Well organised with surveys to capture how the participants are acting in this domain
 - <https://www.rd-alliance.org/sites/default/files/attachment/questionnaire.pdf>
 - <https://docs.google.com/spreadsheets/d/1gZXZcmL3E3B5mVbWwgpvr2z1dPyFpHF5L9JvOrGbsyl/edit#gid=0>

□ IG Software Source Code (2)

- Important topic: Software Citation
 - Review of Force11 Software Citation WG results (Arfon Smith (STSI) was one of the group leader of this work, ADASS XXV BoF about this topic)
 - Different Identifier for each version of a source code ?

IG Repository Platforms for Research Data

- Repository interfaces for data analytics
 - Move the analysis to the data rather than moving the data to the analysis
 - If Data spread in multiple locations => split the analysis among multiple locations
 - Various solutions, but need a common understanding of the data, such as a data model
 - Providing functionality through a common API (how if multiple data types ?). Involves discovery and use of discovered data
 - Enable data visualization capabilities to look at data stored at one repository.

□ IG Repository Platforms for Research Data (2)

- Relationship to DMPs, integration with repositories
- Policies can be additional metadata relevant to data

□ IG Repository Platforms for Research Data (3)

- Can we develop a data architecture that is implementable ?
- Extend OAIS to an Archive interaction layer
- Common interoperable protocols and interface specifications for repositories
- Enabling access to any object within an OAIS repository
- A use case is needed.

□ IG Virtual Research Environments

- VRE and Science Gateways, Virtual Laboratories
- Aim: common architecture or best practices to enable the interoperability, avoid duplication of effort
- Key skills Issues in Europe (VRE), North American (SG), Australia (VL)
- https://docs.google.com/presentation/d/1f5rC3ZB-AKZpw3XFSReIDV42H1jOEmRr08zJu-1CR_w/edit?usp=sharing

□ WG Data Usage Metrics

- Standardized metrics for data like for articles
- Overview of existing initiatives in this field (Make Data Count, DataOne, Elsevier, etc.)
- Some Data is loaded but not used
- Citation and usage (some people are using but not citing)
- Work with many datasets, cite them all ?
- Realistic to put a DOI on each request (example: a database with 1 million queries per day...) ?

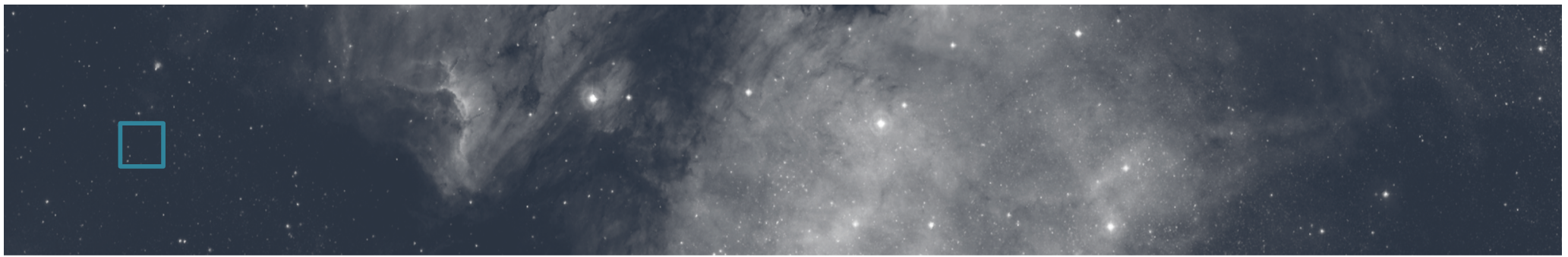
IG Research Data Architectures in

□ Research Institutions

- Interoperability between institutional research data infrastructures and international or discipline based infrastructures
- New IG => presentation of best practices at Helsinki University and University College London
- Several differences but in any case a good place to share, to adapt, etc.

□ Conclusion

- Still no dedicated IG / WG to our domain
 - Has been discussed during Santiago DCP session
 - To small participation
- But, still many opportunities to participate and to get involved



H2020-Astronomy ESFRI and Research Infrastructure Cluster (Grant Agreement number: 653477).