

What's new in Aladin Lite and Aladin v8 ?



Thomas Boch
Pierre Fernique



IVOA Interop Madrid, May 2014

Aladin Lite

In a few words

- **Viewer** of multi-resolution all-sky image surveys (**HiPS**: Hierarchical Progressive Surveys)
 - visualize any part of the sky
 - **graphic overlays**: catalogues, footprints
 - **interactivity**: pan, zoom, selection
- Runs on **any modern browser** (HTML5 canvas), including touch devices
- Easily **embeddable** on a web page
- **Lightweight** (40kB minified & gzipped)
- **Controllable** through a Javascript API

What's new ?

- improved interactivity
 - object selection
 - listen and react to events:
zoom update, object hovered, object clicked
- progressive catalogues
- overlay foreground image survey (work in progress)
- other
 - color maps
 - cleaned up API (but still backwards compatible)
 - new methods in API: `getFov`, `pix2world`, `world2pix`, `getFovCorners`

Examples

<http://cds.u-strasbg.fr/~boch/talks/IVOAMadridMay2014/demos.html>

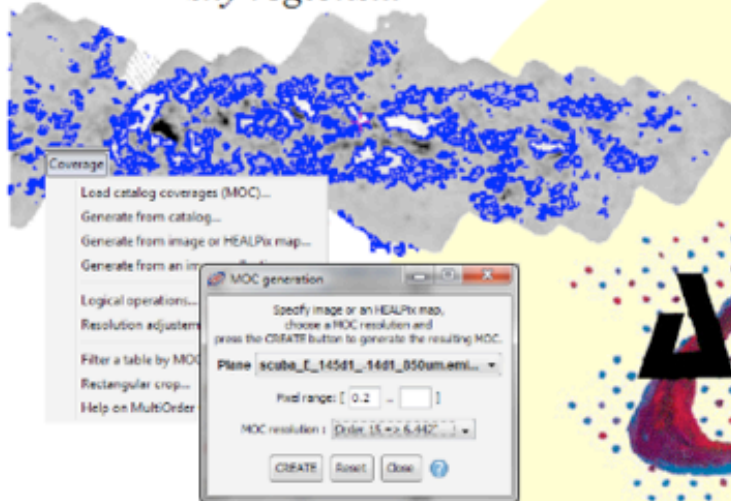
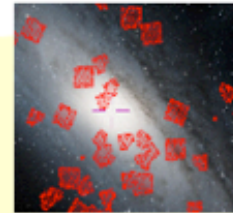
- Markers/interaction
- Progressive catalogue
- Overlay SHS image HiPS over DSS background

Aladin v8

What's new in release V8

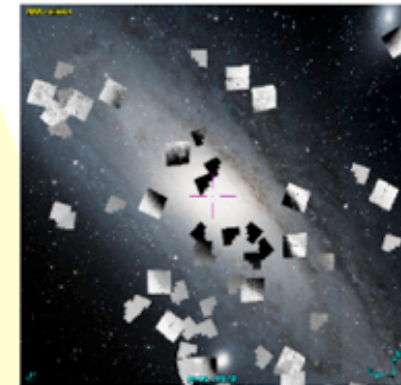
MOC: Multi-Order Coverage map

Generate, display & manipulate sky regions...



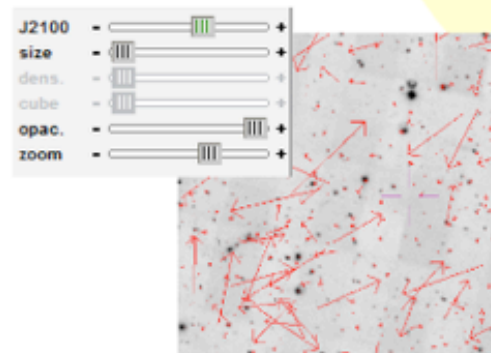
HiPS : Hierarchical Progressive Survey

Access, display & generate progressive surveys...



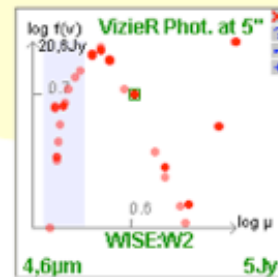
Dynamical proper motion

Move the stars by epoch



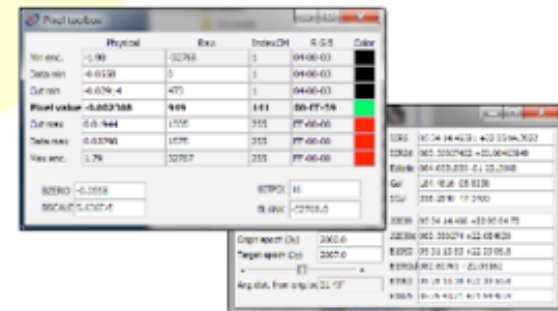
Photometry

Discover all photometry measurements around a position



Pixel & coordinate toolboxes

Basic functions for pixel & coordinate manipulations



Demo

- MOC
- Proper motions: visualize pm of **WNO 7
- Photometry tool
- HiPS

HiPS

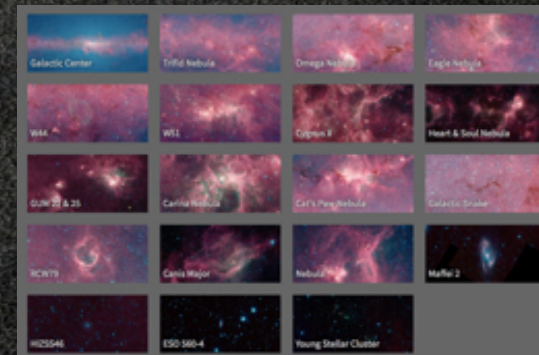
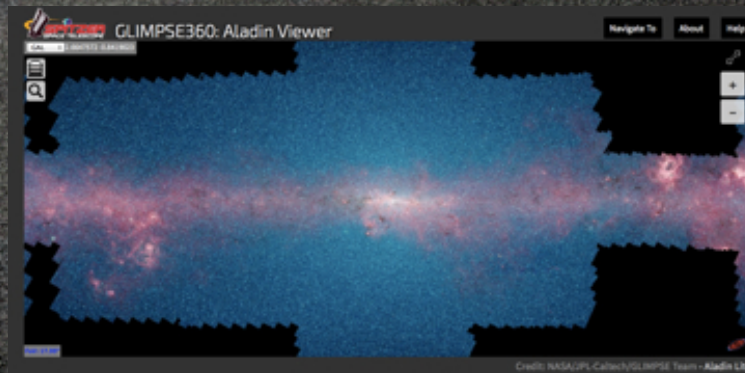
Hierarchical Progressive Surveys

- Hierarchical tiling mechanism to browse seamlessly image, catalogue and cube data
- 150+ image HiPS available
(full list at <http://aladin.u-strasbg.fr/java/nph-aladin.pl?frame=aladinHpxList>)
- latest updates include:
AllWISE, SDSS DR9, HST (13 bands), XMM/PN, GOODS/HST
- distributed by different institutes:
 - alasky.u-strasbg.fr (CDS)
 - saada.unistra.fr
 - healpix.ias-psud.fr
 - mill.astro.puc.cl
 - www.spitzer.caltech.edu
 - cade.irap.omp.eu

GLIMPSE 360 Press Release



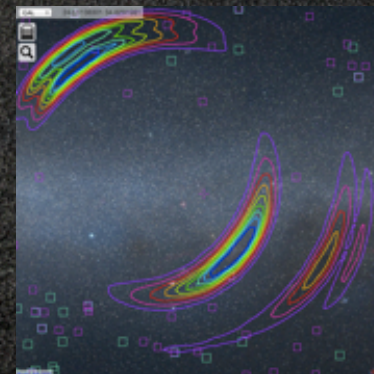
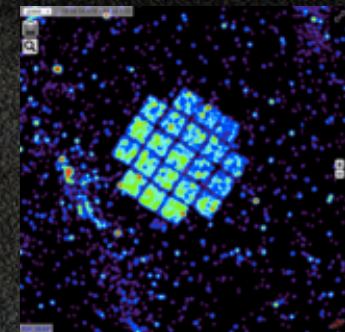
- Spitzer team PR on March 20th
- Color HiPS generated from GLIMPSE 360 data



- <http://www.spitzer.caltech.edu/glimpse360/aladin>
- Launched 126k times from 90k different IPs

Projects using Aladin Lite

- CADE (HEALPix map preview)
- ADS Labs
- ADS All Sky Survey
(Simbad bibliographical heatmaps)
<http://www.adsass.org/aladin/>
- LIGO-Virgo
- Blackwater Skies
- Simbad/VizieR



Links

- Aladin Lite
<http://aladin.u-strasbg.fr/AladinLite/>
- Aladin v8
<http://aladin.u-strasbg.fr/>
- HiPS
<http://aladin.u-strasbg.fr/hips/>
- MOC
<http://ivoa.net/documents/MOC/>