

Connecting planetary plasma data with IVOA tools using SAMP

*B Cecconi^a, B Renard^b, N André^b, R Hitier^c, C Jacquey^b
and the CDPP team*

^a LESIA, Obs. Paris, Meudon; ^b IRAP, Toulouse, ^c Colibri

- CDPP (Centre de Données de la Physique des Plasmas)
french data center for plasma physics
- AMDA (Automated Multi Dataset Analysis)
A generic Webtool for Space Physics data :
 - automated event search and characterisation
 - catalogue generation and exploitation
 - automated database conditional extraction
 - access to remote Data Centers
- Remote access is built on SPASE (Space Physics Archive Search and Extract), which a standard in space physics.

Welcome to AMDA

AMDA-NG4/Migration Step - Vi... Welcome to AMDA http://cdpp-amd...esultTable.asc spase - Recherche Google

cdpp-amda.cesr.fr/DDHTML/HTML/loginreq.php

Les plus visités RSS Les dernières i... AMDA VO-Paris CNRS - SG - Ach... GhoSST / search... Marque-pages

Help Feedback Logout

My Data My Parameters My Time Tables My Catalogs Plot Data Download Data Search in Data Add External Data

External Data Centers

- close all open all
- CDAWEB
- MAPSKP
 - Cassini
- THEMIS
 - THEMIS-A
 - THEMIS-B
 - THEMIS-C
 - THEMIS-D
 - THEMIS-E
- VEXGRAZ
 - VEX

My Data from External Data Centers

Save Modifs

- close all open all
- MAPSKP
 - Cassini
- CDAWEB
- WIND
- STEREO
- POLAR
- GOES_7
- ACE
- THEMIS
 - THEMIS-A
- VEXGRAZ
 - VEX
 - Vex_mag
 - MAG_VSO

AMDA: External data module

Welcome to AMDA

AMDA-NG4/Migration Step - Vi... Welcome to AMDA spase - Recherche Google

cdpp-amda.cesr.fr/DDHTML/HTML/loginreq.php

Les plus visités RSS Les dernières i... AMDA VO-Paris CNRS - SG - Ach... GhoSST / search... Marque-pages

Help Feedback Logout

My Data My Parameters My Time Tables My Catalogs Plot Data Download Data Search in Data Add External Data

My Data

- MY PARAMETERS
 - temp_qtn
 - fplasma_snd
 - fplasma_qtn
 - density_lp_proxy
 - density_lp_20050216
 - skr_period_s
 - skr_period_n
 - sw_saturn_bmag
 - sw_saturn_rho
 - sw_saturn_vmag
 - CCMC_Carrington_2065/saturn
 - CCMC_Carrington_2065/mars
 - CCMC_Carrington_2065/venus
 - kaguya_lrs_rx1
 - kaguya_lrs_rx2

move to folder NEW FOLDER

MY FILES

- cdpp_2005047.txt
- 2005047_souder.bt
- NEPROXY2005-01-01T00-00-00Z_2005-03-30T23-59-59.999Z.dat
- density_LP_2005-02-18.txt
- test-2.txt
- SW_saturn.asc
- C_ORB_07_1997_095_GAN_64.TAB
- pointdata_conv_22181.txt
- pointdata_conv_19971.txt
- pointdata_conv_24615.txt
- LRS_NPW_V010_20071211.cdf

Upload File

max size: 30MB
file format: ASCII CDF CEF

Define Parameter

Parameter Name: sw_saturn_vmag
File Mask: SW_saturn.asc
Parameter Type: FLOAT
Parameter Size: 1
Time Sampling (sec): 3600
Max Time Sampling (sec):
Fill Value (optional):
Units (optional): km/s
Y Title (optional):
Legend (optional):

Save Parameter into J Reset

SW_saturn.asc

```

2004-01-01T00:30:00 0.180933 0.0234803 467.958
2004-01-01T01:30:00 0.178884 0.0230247 467.396
2004-01-01T02:30:00 0.177465 0.0225466 466.411
2004-01-01T03:30:00 0.178860 0.0225014 465.891
2004-01-01T04:30:00 0.180578 0.0224495 465.710
2004-01-01T05:30:00 0.181953 0.0223346 465.208
2004-01-01T06:30:00 0.182860 0.0222250 464.493
2004-01-01T07:30:00 0.183495 0.0221776 463.988
2004-01-01T08:30:00 0.184059 0.0221694 463.467
2004-01-01T09:30:00 0.184035 0.0221046 462.526
2004-01-01T10:30:00 0.183612 0.0220038 461.747
.....

```

Parameter Start Position [>= 1]: 3

AMDA: upload data module

Welcome to AMDA

AMDA-NG4/Migration Step - Vi... Welcome to AMDA spase - Recherche Google

cdpp-amda.cesr.fr/DDHTML/HTML/loginreq.php

Les plus visités RSS Les dernières i... AMDA VO-Paris CNRS - SG - Ach... GhoSST / search... Marque-pages

Help Feedback Logout

My Data My Parameters My Time Tables My Catalogs Plot Data Download Data Search in Data Add External Data

sw_saturn_vmag

CCMC_Carrington_2065/saturn

CCMC_Carrington_2065/mars

CCMC_Carrington_2065/venus

kaguya_lrs_rx1

kaguya_lrs_rx2

move to folder NEW FOLDER

MY FILES

cdpp_2005047.txt

2005047_souder.txt

NEPROXY2005-01-01T00-00-00Z_2005-03-30T23-59-59.999Z.dat

density_LP_2005-02-16.txt

test-2.txt

SW_saturn.asc

C_ORB_07_1997_095_GAN_64.TAB

pointdata_conv_22181.txt

pointdata_conv_19971.txt

pointdata_conv_24615.txt

LRS_NPW_V010_20071211.cdf

Upload File

max size: 30MB

file format: ASCII CDF CEF

time format: Standard NonStandard

time sampling: Constant Variable

From Local Machine

Parcourir...

From URL Proposed Sites

Upload Reset

Define Parameter

Parameter Name: sw_saturn_vmag

File Mask: SW_saturn.asc

Parameter Type: FLOAT

Parameter Size: 1

Time Sampling (sec): 3600

Max Time Sampling (sec):

Fill Value (optional):

Units (optional): km/s

Y Title (optional):

Legend (optional):

Save Parameter into J Reset

SW_saturn.asc

```

2004-01-01T00:30:00 0.180933 0.0234803 467.958
2004-01-01T01:30:00 0.178884 0.0230247 467.396
2004-01-01T02:30:00 0.177465 0.0225466 466.411
2004-01-01T03:30:00 0.178860 0.0225014 465.891
2004-01-01T04:30:00 0.180578 0.0224495 465.710
2004-01-01T05:30:00 0.181953 0.0223346 465.208
2004-01-01T06:30:00 0.182860 0.0222250 464.493
2004-01-01T07:30:00 0.183495 0.0221776 463.988
2004-01-01T08:30:00 0.184059 0.0221694 463.467
2004-01-01T09:30:00 0.184035 0.0221046 462.526
2004-01-01T10:30:00 0.183612 0.0220038 461.747
.....

```

Parameter Start Position [>= 1]: 3

AMDA: upload data module

Welcome to AMDA

AMDA-NG4/Migration Step - Vi... Welcome to AMDA spase - Recherche Google

cdpp-amda.cesr.fr/DDHTML/HTML/loginreq.php

Help Feedback Logout

My Data My Parameters My Time Tables My Catalogs Plot Data Download Data Search in Data Add External Data

Select parameters to construct My Parameter

close all open all

- AMDA
- MAPSKP
- CDAWEB
- THEMIS
- VEXGRAZ
- My Data

My Workspace

- MY PARAMETERS
- Earth
- Saturn
- delta_lat
- density_snd
- density_qtn
- fplasma_lpx**
- fplasma_lps
- sw_saturn_ram
- skr_period_s_hr
- dskr_rh_dt
- dskr_rh_dphi_s
- mex_param1
- mex_param2
- bm_vex

move to folder NEW FOLDER

ALIASES

- ksm_z
- ksm_x
- ksm_y

Construct Parameter

8.89*sqrt(wsd_density_lp_proxy)

HOWTO

Bricks for construction :

- AMDA parameters from left-frame tree or your aliases
- Operators: +, -, *, /, ^ and brackets: (), []
- Constants, IDL and AMDA functions

Example:
sin(param1)^2+sqrt(abs(param2))*5

Constants IDL Functions AMDA Functions

My Parameter Name	Time Step (secs)	Units (optional)	My Parameter Description (optional)
fplasma_lpx	60		

Save My Parameter into J Reset

Define an Alias for AMDA Parameter (optional)

AMDA Parameter	My Alias

Save Alias

AMDA: parameter builder module

Welcome to AMDA

AMDA-NG4/Migration Step - Vi... Welcome to AMDA http://cdpp-amd...esultTable.asc spase - Recherche Google

cdpp-amda.cesr.fr/DDHTML/HTML/loginreq.php

Les plus visités RSS Les dernières i... AMDA VO-Paris CNRS - SG - Ach... GhoSST / search... Marque-pages

Help Feedback Logout

My Data My Parameters My Time Tables My Catalogs Plot Data Download Data Search in Data Add External Data

Select parameters to construct the condition

- close all open all
- AMDA
 - MAPSKP
 - Cassini
 - MAG
 - MAG_KSM
 - MAGNITUDE
 - VECTOR
 - MIMI
 - TRAJ
 - RPWS
 - CAPS
 - CDAWEB
 - THEMIS
 - VEXGRAZ
 - My Parameters
 - My Data

Construct Condition:

MAPSKP:MAG_KSM:MAGNITUDE >
2

HOWTO

Bricks for construction :

- AMDA parameters from left-frame tree
- Operators: +, -, *, /, ^ and brackets: () , []
- relational operators: >, <
- logical operators: &, |
- Constants, IDL and AMDA functions

Example:
sin(param1)^2 > 0.3 & sqrt(abs(param2))*5 < 5.0

Constants IDL Functions AMDA Functions

Averaging/Interpolation

Sampling time step 600 secs

Data Gap if no data for interval >

5 * data sampling time

Output Result To

file in / :

Year Mon Day Hour Min Sec
Start: 2007 12 11 00 00 00

Day Hour Min Sec
Interval: 001 00 00 00

Do Search

Select Input Time Table:

My Time Tables Shared Time Tables

Do Search For Intervals

Reset

Save Condition

Load Condition search_auroral

Delete Condition search_auroral

AMDA: Search module

Welcome to AMDA

AMDA-NG4/Migration Step - Vi... Welcome to AMDA spase - Recherche Google

cdpp-amda.cesr.fr/DDHTML/HTML/loginreq.php

Help Feedback Logout

My Data My Parameters My Time Tables My Catalogs Plot Data Download Data Search in Data Add External Data

MY TIME TABLES

- SKR_data_availability_TT
- LATgt30to60_Rit10
- LATgt60_Rit10
- Rit10
- innertorus_day
- high-latitude-perikrone-2008
- high-latitude-perikrone-2009
- List_of_Cassini_Titan_flybys
- BOW-SHOCK
- NORTH_CUSP
- C1-auroral-07-10
- C2-auroral-07-10
- C3-auroral-07-10
- C4-auroral-07-10
- name
- HELIO_EVENT_CATALOG_search_result
- carrington_rotation_extract
- upstream_ganymede_GLL
- CIR_LIST_MASON_2009
- CIR_LIST_MASON_2009_extended
- CIR_LIST_MASON_2009_extended2
- Mason_Vge400
- test

move to folder NEW FOLDER

copy to shared EARTH

SHARED TIME TABLES

- EARTH
- SUN
- SOLAR_WIND
- MARS
- SATURN
- AUXILIARY
- OTHER

Construct/Modify the Time Table

Table Name: HELIO_EVENT_CATALOG_search_result

Date of Generation: Mon, 19 Sep 2011 12:29:53 GMT

Description:

```
SELECT
solar_wind_event.solar_wind_event_id,solar_wind_event.sw_list,solar_wind_event.time_start,solar
_wind_event.time_end,solar_wind_event.bzn,solar_wind_event.bzs,solar_wind_event.eyc,solar_wi
nd_event.hss,solar_wind_event.imc,solar_wind_event.ir,solar_wind_event.is,solar_wind_event.lss
,solar_wind_event.pc,solar_wind_event.sbc,solar_wind_event.misc,solar_wind_event.w,solar_wind
_event.iB,solar_wind_event.ace,solar_wind_event.rem FROM solar_wind_event WHERE
time_start>='2007-07-05T00:00:00' AND time_start<='2007-08-05T00:00:00' LIMIT 1000
OFFSET 0
```

Source:

```
http://festung1.oats.inaf.it:8080/helio-
hec/HelioQueryService?STARTTIME=2007-07-05T00:00:00,2007-07-05T00:00:00,2007-07-05T00:
00:00&ENDTIME=2007-08-05T00:00:00,2007-08-05T00:00:00,2007-08-05T00:00:00&
FROM=solar_wind_event,wind_mfi_ip_shock,stereo_hi_cme
```

Operations on Intervals

Extend (min): 0 Shift (min): 0

Apply Undo

Filter: [] sec ≤ duration ≤ [] sec

Apply

Statistical Info

Intervals 7

Min [] Max []

Mean [] St.dev []

Median [] Density []

Apply

Save My Time Table into []

Reset

Sort Merge

StartTime - StopTime		
yyyy-mm-ddThh:mm:ss	yyyy-mm-ddThh:mm:ss	
2007-07-08T14:09:00	2007-07-10T03:29:00	-- 1
2007-07-11T18:08:00	2007-07-13T06:09:00	-- 2
2007-07-19T02:10:00	2007-07-19T02:11:00	-- 3
2007-07-24T15:29:00	2007-07-24T15:30:00	-- 4
2007-07-28T01:30:00	2007-07-28T01:31:00	-- 5
2007-07-29T06:10:00	2007-07-29T06:11:00	-- 6
2007-08-02T13:29:00	2007-08-05T08:49:00	-- 7

AMDA: Timetable module

Welcome to AMDA

AMDA-NG4/Migration Step - Vi... Welcome to AMDA spase - Recherche Google

cdpp-amda.cesr.fr/DDHTML/HTML/loginreq.php

Les plus visités RSS Les dernières i... AMDA VO-Paris CNRS - SG - Ach... GhoSST / search... Marque-pages

Help Feedback Logout

My Data My Parameters My Time Tables My Catalogs Plot Data Download Data Search in Data Add External Data

copy to shared EARTH

SHARED TIME TABLES

- EARTH
- SUN
- SOLAR_WIND
- MARS
- SATURN
- AUXILIARY
- OTHER
- VENUS

Public link

Operations

Merge Intervals Intersection

Download

Time format: YYYY-MM-DDThh:mm:ss File format: plain text

Compression: targz zip

Download

Routines to read TT

Upload (txt or vot xml)

Time Format (txt): YYYY-MM-DDThh:mm:ss

From Local Machine

From URL

Upload Reset

Construct/Modify the Time Table

Table Name: HELIO_EVENT_CATALOG_search_result

Date of Generation: Mon, 19 Sep 2011 12:29:53 GMT

Description:

```
SELECT
solar_wind_event.solar_wind_event_id,solar_wind_event.sw_list,solar_wind_event.time_start,solar
_wind_event.time_end,solar_wind_event.bzn,solar_wind_event.bzs,solar_wind_event.eyc,solar_wi
nd_event.hss,solar_wind_event.imc,solar_wind_event.ir,solar_wind_event.is,solar_wind_event.lss
,solar_wind_event.pc,solar_wind_event.sbc,solar_wind_event.misc,solar_wind_event.w,solar_wind
_event.iB,solar_wind_event.ace,solar_wind_event.rem FROM solar_wind_event WHERE
time_start>='2007-07-05T00:00:00' AND time_start<='2007-08-05T00:00:00' LIMIT 1000
OFFSET 0
```

Source:

```
http://festung1.oats.inaf.it:8080/helio-
hec/HelioQueryService?STARTTIME=2007-07-05T00:00:00,2007-07-05T00:00:00,2007-07-05T00:
00:00&ENDTIME=2007-08-05T00:00:00,2007-08-05T00:00:00,2007-08-05T00:00:00&
FROM=solar_wind_event,wind_mfi_ip_shock,stereo_hi_cme
```

Operations on Intervals

Extend (min): 0 Shift (min): 0

Apply Undo

Filter: sec ≤ duration ≤ sec

Apply

Statistical Info

Intervals 7

Min Max

Mean St.dev

Median Density

Apply

Save My Time Table into .j

Reset

StartTime - StopTime

yyyy-mm-ddThh:mm:ss	yyyy-mm-ddThh:mm:ss	
2007-07-08T14:09:00	2007-07-10T03:29:00	-- 1
2007-07-11T18:08:00	2007-07-13T06:09:00	-- 2
2007-07-19T02:10:00	2007-07-19T02:11:00	-- 3
2007-07-24T15:29:00	2007-07-24T15:30:00	-- 4
2007-07-28T01:30:00	2007-07-28T01:31:00	-- 5
2007-07-29T06:10:00	2007-07-29T06:11:00	-- 6
2007-08-02T13:29:00	2007-08-05T08:49:00	-- 7

Sort Merge

AMDA: Timetable module

Welcome to AMDA

AMDA-NG4/Migration Step - Vi... Welcome to AMDA spase - Recherche Google

cdpp-amda.cesr.fr/DDHTML/HTML/loginreq.php

Les plus visités RSS Les dernières i... AMDA VO-Paris CNRS - SG - Ach... GhoSST / search... Marque-pages

Help Feedback Logout

My Data My Parameters My Time Tables My Catalogs Plot Data **Download Data** Search in Data Add External Data

SLS4_Longitude_South@Iowa
SKR_Phase_North_And_South@LESIA
MAG
RTN_1min@PDS
RTN_1sec@PDS
b_rtn
 b_mag
KSM_1min@PDS
KSM_1sec@PDS
KSO_1min@PDS
KSO_1sec@PDS
KRTP_1min@PDS
KRTP_1sec@PDS
Jupiter_RTN@PDS
CAPS
els@PDS
telemetry_mode
spectra_anode_1
spectra_anode_2
spectra_anode_3
spectra_anode_4
spectra_anode_5
spectra_anode_6
spectra_anode_7
spectra_anode_8
Cassini_Private
RPWS
skr@LESIA
 skr_total_power_emitted
skr_flux_RH
skr_flux_LH
skr_polarisation
Langmuir_Probe@IRF
Galileo
mSWIM_Saturn
mSWIM_Jupiter

Download Settings

Parameters:
All in One File One File per Parameter

Sampling time step secs

Output file name

TimeTable intervals:
All in One File One File per Time Interval

Time format:

Add info header to data file No[Separate] header

Output file format:
CDF netCDF CEF ASCII

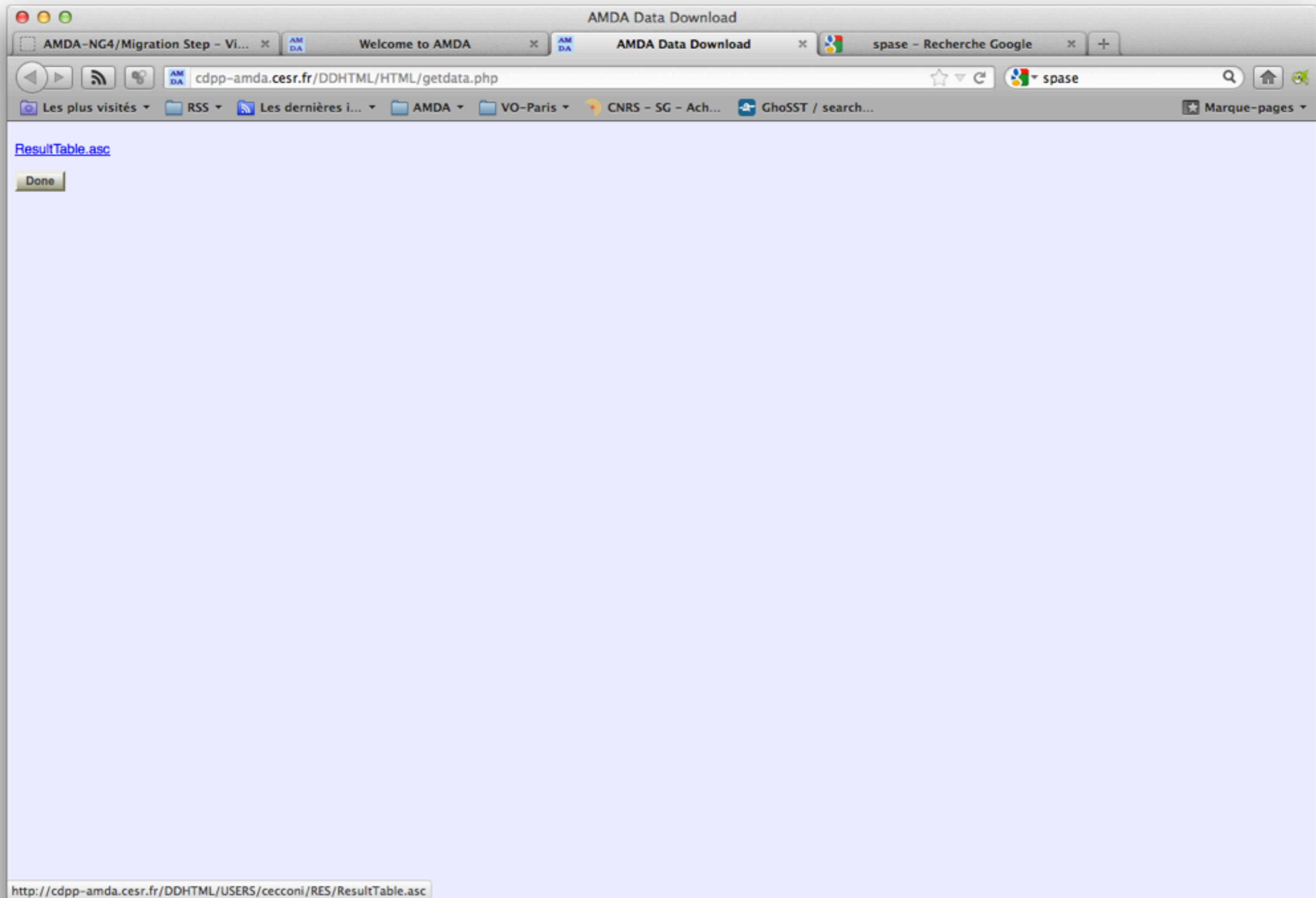
Compression:
tar+gzip zip gzip none

Parameters To Download
 lat : cass_lat
 LT : cass_lt
 b_mag : cass_bmag_rtn1s
 skr_total_power_emitted : skr_e

	Year	Mon	Day	Hour	Min	Sec
Start:	<input type="text" value="2007"/>	<input type="text" value="12"/>	<input type="text" value="11"/>	<input type="text" value="00"/>	<input type="text" value="00"/>	<input type="text" value="00"/>
	Day	Hour	Min	Sec		
Interval:	<input type="text" value="001"/>	<input type="text" value="00"/>	<input type="text" value="00"/>	<input type="text" value="00"/>		

Select Input Time Table:
 My Time Tables Shared Time Tables

AMDA: Download module



AMDA: Download result page

Mozilla Firefox

AMDA-NG4/Migration Step - Vi... Welcome to AMDA http://cdpp-amd...esultTable.asc spase - Recherche Google

cdpp-amda.cesr.fr/DDHTML/USERS/cecconi/RES/ResultTable.asc

Les plus visités RSS Les dernières i... AMDA VO-Paris CNRS - SG - Ach... GhoSST / search... Marque-pages

```

cassini_public_orbit_cassini@iowa_lat; cassini_public_orbit_cassini@iowa_lt; cassini_public_rtn_lsec@pds_b_mag; cassini_private_skr@lesia_skr_total_power_emitted;
Units: deg; hours; nT; W/sr
2007-12-11T00:05:00 12.9860 13.3190 0.731022 0.00000 0.00000 0.00000 0.00000
2007-12-11T00:15:00 12.9925 13.3195 0.706640 1.00567e+06 0.00000 1.30200e+06 0.00000
2007-12-11T00:25:00 13.0020 13.3215 0.295257 632333. 0.00000 1.88333e+06 0.00000
2007-12-11T00:35:00 13.0115 13.3225 0.436232 1.34550e+07 0.00000 1.98450e+07 0.00000
2007-12-11T00:45:00 13.0205 13.3245 0.690285 2.14333e+08 39333.3 2.25667e+08 125667.
2007-12-11T00:55:00 13.0300 13.3255 0.520933 4.39667e+08 0.00000 4.46000e+08 68000.0
2007-12-11T01:05:00 13.0395 13.3275 0.489020 9.62750e+07 0.00000 1.03350e+08 0.00000
2007-12-11T01:15:00 13.0485 13.3285 0.613750 2.43000e+07 0.00000 3.17000e+07 0.00000
2007-12-11T01:25:00 13.0580 13.3305 0.533042 5.37333e+07 0.00000 6.70667e+07 0.00000
2007-12-11T01:35:00 13.0670 13.3315 0.445460 1.02675e+08 0.00000 1.09450e+08 0.00000
2007-12-11T01:45:00 13.0765 13.3335 0.608749 5.48667e+07 0.00000 6.44333e+07 25566.7
2007-12-11T01:55:00 13.0855 13.3345 0.428240 3.92000e+07 0.00000 4.05333e+07 0.00000
2007-12-11T02:05:00 13.0950 13.3365 0.386812 4.27500e+07 0.00000 6.05250e+07 183275.
2007-12-11T02:15:00 13.1045 13.3375 0.618253 1.25333e+08 0.00000 1.63000e+08 123000.
2007-12-11T02:25:00 13.1135 13.3395 0.399808 3.78400e+08 0.00000 4.04433e+08 279667.
2007-12-11T02:35:00 13.1230 13.3405 0.509187 1.49350e+08 0.00000 1.97975e+08 1.67525e+06
2007-12-11T02:45:00 13.1320 13.3425 0.503273 2.27333e+08 0.00000 2.78000e+08 1.91000e+06
2007-12-11T02:55:00 13.1415 13.3435 0.307077 8.08333e+07 0.00000 1.23333e+08 1.22700e+06
2007-12-11T03:05:00 13.1505 13.3455 0.417062 1.94050e+07 6400.0 2.86500e+07 445250.
2007-12-11T03:15:00 13.1600 13.3465 0.462597 385667. 0.00000 6.44000e+06 134900.
2007-12-11T03:25:00 13.1690 13.3485 0.563969 499667. 0.00000 7.29000e+06 161367.
2007-12-11T03:35:00 13.1785 13.3495 0.845343 332750. 0.00000 1.17500e+07 0.00000
2007-12-11T03:45:00 13.1875 13.3515 0.726245 0.00000 0.00000 4.83000e+06 0.00000
2007-12-11T03:55:00 13.1970 13.3525 0.893797 969667. 49666.7 1.37733e+07 68033.3
2007-12-11T04:05:00 13.2065 13.3545 0.660340 54250.0 1.00000e+06 5.04000e+06 1.00000e+06
2007-12-11T04:15:00 13.2155 13.3555 0.831865 0.00000 637000. 607333. 705333.
2007-12-11T04:25:00 13.2245 13.3575 0.671295 2.24333e+06 417667. 4.71667e+06 417667.
2007-12-11T04:35:00 13.2340 13.3585 0.446843 6.65000e+06 25500.0 6.92500e+06 25500.0
2007-12-11T04:45:00 13.2435 13.3605 0.564715 9.37700e+06 171067. 1.00857e+07 235000.
2007-12-11T04:55:00 13.2525 13.3615 0.729895 376667. 119667. 443600. 1.25400e+06
2007-12-11T05:05:00 13.2615 13.3635 0.783901 0.00000 23625.0 0.00000 23625.0
2007-12-11T05:15:00 13.2710 13.3645 1.00676 2.42318e+07 159333. 2.42980e+07 159333.
2007-12-11T05:25:00 13.2805 13.3665 0.571102 2.31000e+07 209567. 2.44000e+07 209567.
2007-12-11T05:35:00 13.2895 13.3675 0.378236 6.47500e+06 0.00000 7.77500e+06 0.00000
2007-12-11T05:45:00 13.2985 13.3695 0.608093 0.00000 0.00000 0.00000 0.00000
2007-12-11T05:55:00 13.3080 13.3705 1.40338 0.00000 0.00000 0.00000 0.00000
2007-12-11T06:05:00 13.3170 13.3725 1.25266 0.00000 3.34950e+06 0.00000 3.34950e+06
2007-12-11T06:15:00 13.3265 13.3735 0.888288 0.00000 3.25167e+06 0.00000 3.25167e+06
2007-12-11T06:25:00 13.3355 13.3755 0.839977 0.00000 1.56500e+06 0.00000 1.56500e+06
2007-12-11T06:35:00 13.3450 13.3765 0.773222 0.00000 3.68750e+06 149750. 3.68750e+06
2007-12-11T06:45:00 13.3540 13.3785 0.494974 303000. 5.49667e+06 3.35667e+06 5.49667e+06
2007-12-11T06:55:00 13.3635 13.3800 0.925140 0.00000 2.31667e+06 2.56667e+06 2.31667e+06
2007-12-11T07:05:00 13.3725 13.3815 0.454933 4.33000e+06 129000. 9.27000e+06 129000.
2007-12-11T07:15:00 13.3815 13.3830 1.02334 2.50333e+06 0.00000 2.89000e+06 0.00000
2007-12-11T07:25:00 13.3910 13.3845 1.55901 1.21000e+06 0.00000 1.78000e+06 0.00000
2007-12-11T07:35:00 13.4000 13.3860 1.42801 395250. 0.00000 1.95250e+06 0.00000
2007-12-11T07:45:00 13.4095 13.3875 0.907579 2.84767e+06 0.00000 6.38333e+06 0.00000
2007-12-11T07:55:00 13.4185 13.3890 0.539392 1.83700e+06 0.00000 4.49000e+06 0.00000
2007-12-11T08:05:00 13.4275 13.3905 0.622995 1.50775e+07 0.00000 1.77375e+07 0.00000
2007-12-11T08:15:00 13.4370 13.3920 0.720308 1.91667e+06 0.00000 1.91667e+06 0.00000
2007-12-11T08:25:00 13.4460 13.3935 0.592478 0.00000 0.00000 0.00000 0.00000
2007-12-11T08:35:00 13.4555 13.3950 0.731005 1.16000e+07 0.00000 1.19250e+07 0.00000
2007-12-11T08:45:00 13.4645 13.3965 0.680425 1.23967e+07 0.00000 1.27267e+07 0.00000
2007-12-11T08:55:00 13.4735 13.3980 0.937263 5.06000e+06 0.00000 1.26300e+07 0.00000
2007-12-11T09:05:00 13.4830 13.3995 0.607333 714250. 29525.0 4.52750e+06 30532.5
2007-12-11T09:15:00 13.4920 13.4010 0.571412 8.70967e+06 0.00000 1.03733e+07 0.00000
2007-12-11T09:25:00 13.5015 13.4025 0.682256 6.10333e+06 0.00000 8.88667e+06 0.00000
2007-12-11T09:35:00 13.5105 13.4040 0.754445 1.97500e+07 0.00000 6.80250e+07 0.00000

```

AMDA: Download result (text file)

Welcome to AMDA

manunja.cesr.fr/~richard/amda/DDHTML/HTML/loginreq.php

Help Feedback Logout

My Parameters My Time Tables Plot Data Download Data Search in Data Add External Data

Select parameters to plot

- close all open all
- AMDA
 - ARTEMIS-P1
 - ARTEMIS-P2
 - Cassini
 - ephemeris
 - RPWS
 - skr
 - skr_total_power_emitted
 - skr_flux_RH
 - skr_flux_LH
 - skr_polarisation
 - Langmuir_Probe
 - SLS4_Longitude_North
 - SLS4_Longitude_South
 - SKR_Phase_North_And_South
 - MAG
 - RTN_1min
 - RTN_1sec
 - b_rtn
 - b_mag
 - KSM_1min
 - KSM_1sec
 - KSO_1min
 - KSO_1sec
 - KRTP_1min
 - KRTP_1sec
 - Jupiter_RTN
 - Galileo
 - mSWIM_Saturn
 - mSWIM_Jupiter
 - Voyager_1
 - Voyager_2

Plot Request

D&D	N	Parameter Name	Arguments	Plot Size		X Data Range		Y Data Range	
				Width	Height	Xmin	Xmax	Ymin	Ymax
<input type="radio"/>	<input checked="" type="checkbox"/> 0	skr_e		1	0.2	0	0	0	0
<input type="radio"/>	<input checked="" type="checkbox"/> 1	skr_rh		1	0.2	0	0	0	0
<input type="radio"/>	<input checked="" type="checkbox"/> 2	skr_lh		1	0.2	0	0	0	0
<input type="radio"/>	<input checked="" type="checkbox"/> 3	skr_v		1	0.2	0	0	0	0
<input type="radio"/>	<input checked="" type="checkbox"/> 4	cass_bmag_rtn1s		1	0.2	0	0	0	0
<input type="radio"/>	<input checked="" type="checkbox"/> 5	cass_b_rtn1s		1	0.2	0	0	0	0

Portrait Landscape

Start: Year Mon Day Hour Min Sec
2004 01 01 00 00 00

Interval: Day Hour Min Sec
031 00 00 00

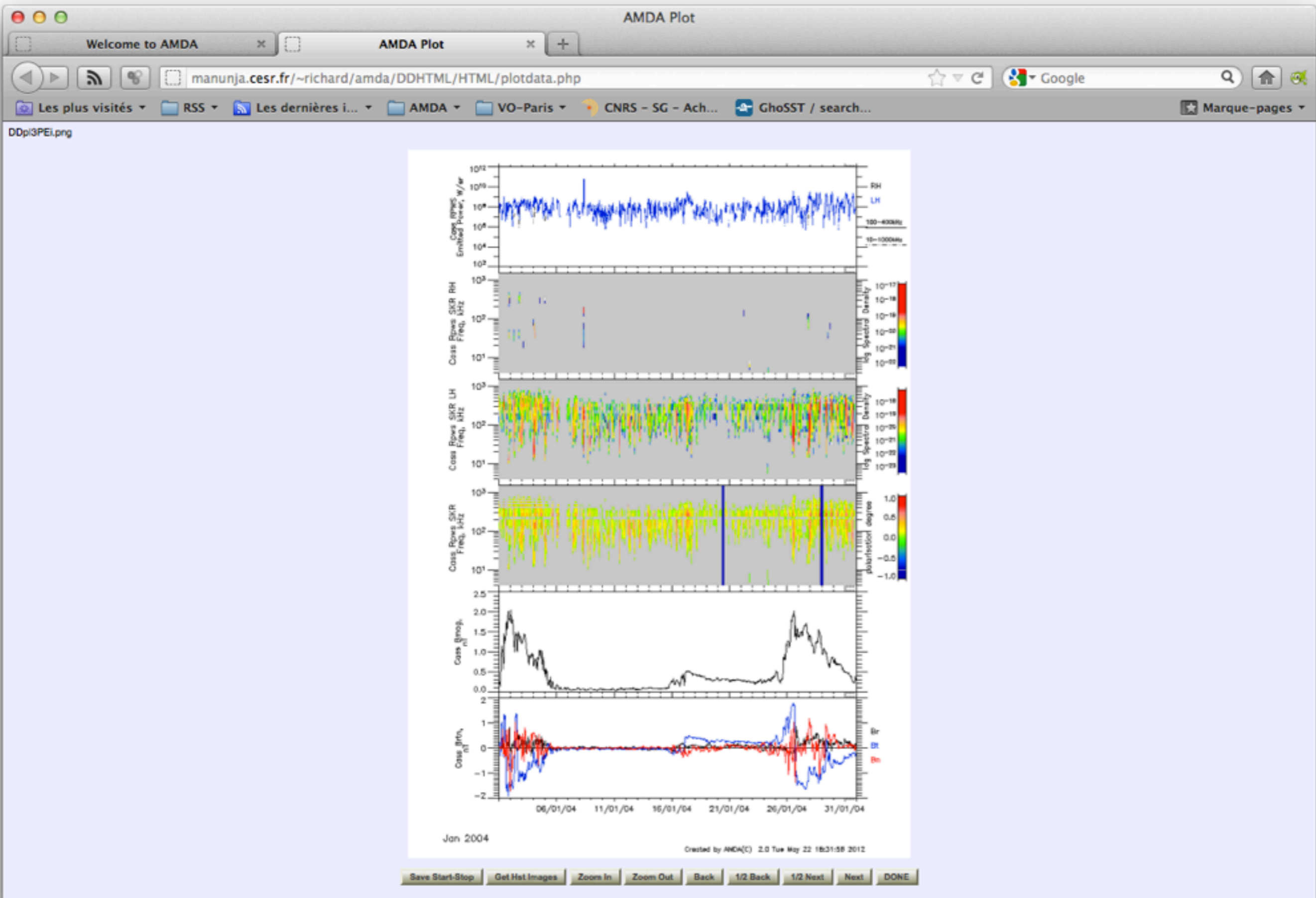
Select Input Time Table:
My Time Tables Shared Time Tables

Time Shifting of Solar Wind Monitor Data (for AMDA Internal Data Base only)

SWMonitor Time Delay (secs)
ACE : 0

Target Year Mon Day Hour Min
Themis-A : 2004 01 01 00 00

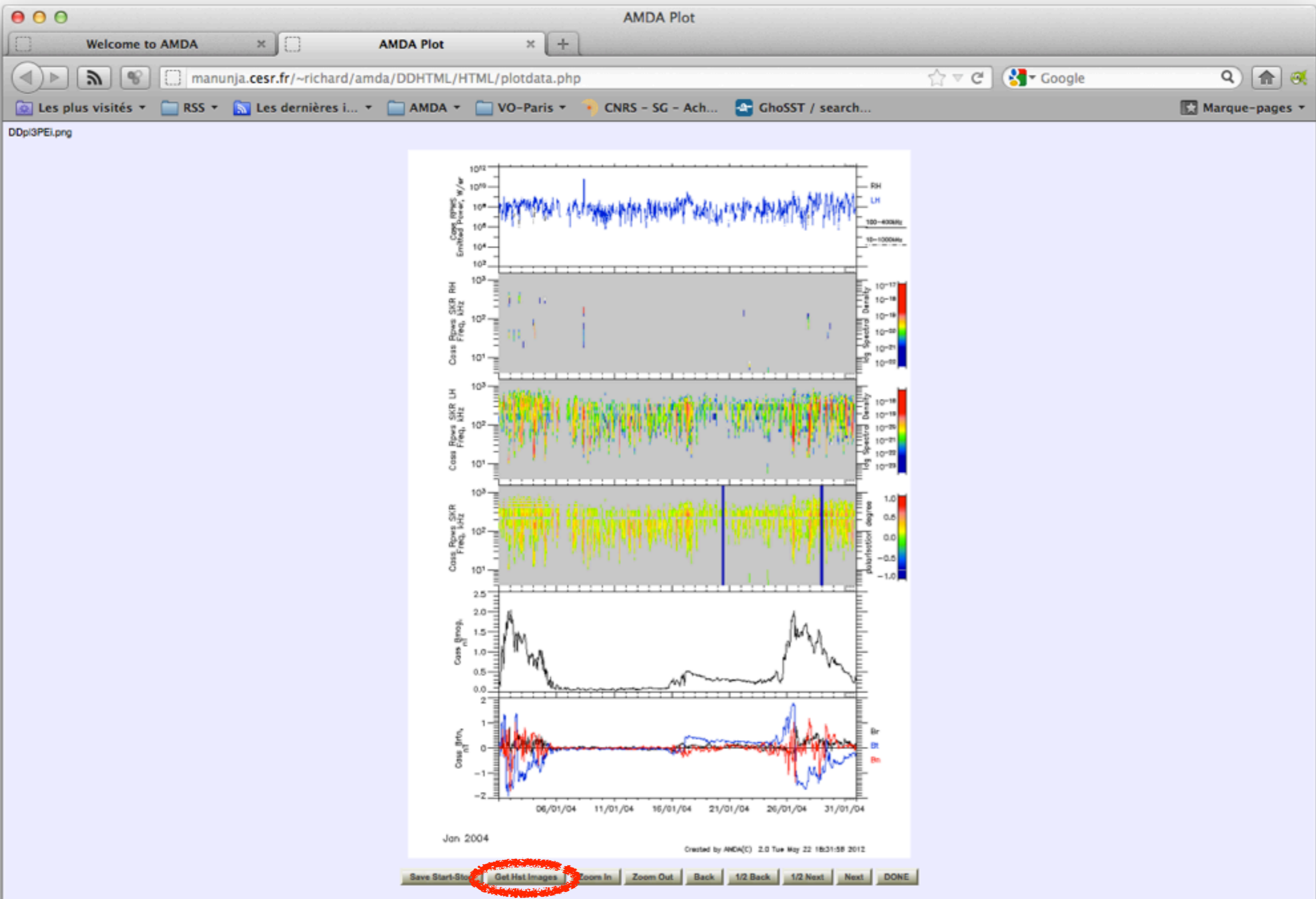
AMDA: Plot module



AMDA: Plot result

Connecting AMDA with Aladin

- Science case:
 - Interplanetary shock passing by Saturn while the Cassini spacecraft is flying in the solar wind upstream from the planet.
 - Cassini detects local magnetic field disturbance, and enhanced radio emissions from Saturn (kilometric auroral radio emissions).
 - Are there HST images of Saturn Aurora at this time ?
 - If yes: plot them in Aladin.
- SAMP: using WebSAMPCconnector.



AMDA: Plot result

AMDA

manunja.cesr.fr/~richard/amda/DDHTML/HTML/Hst2Aladin.html

Time Request

StartTime 2004/01/01 00:00:00

StopTime 2004/02/01 00:00:00

Saturn Jupiter

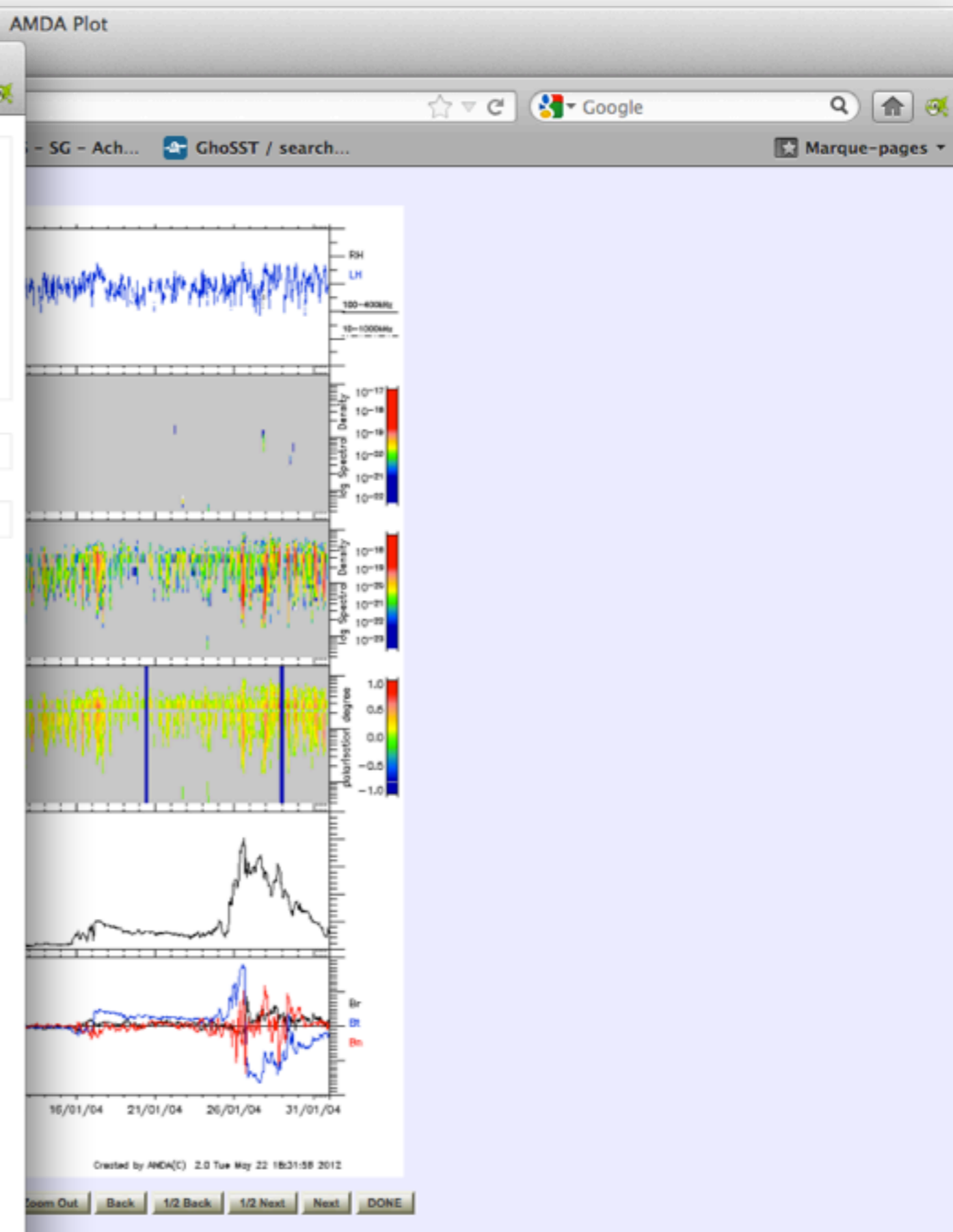
Delta T 1 minute

extend left extend right extend both shift left shift right

Reset Start Stop Plot Images Availability **Preview/Select Images**

Hst Images

Aladin Commands



AMDA: Get HST images module

AMDA

manunja.cesr.fr/~richard/amda/DDHTML/HTML/Hst2Aladin.html

Time Request

StartTime

StopTime

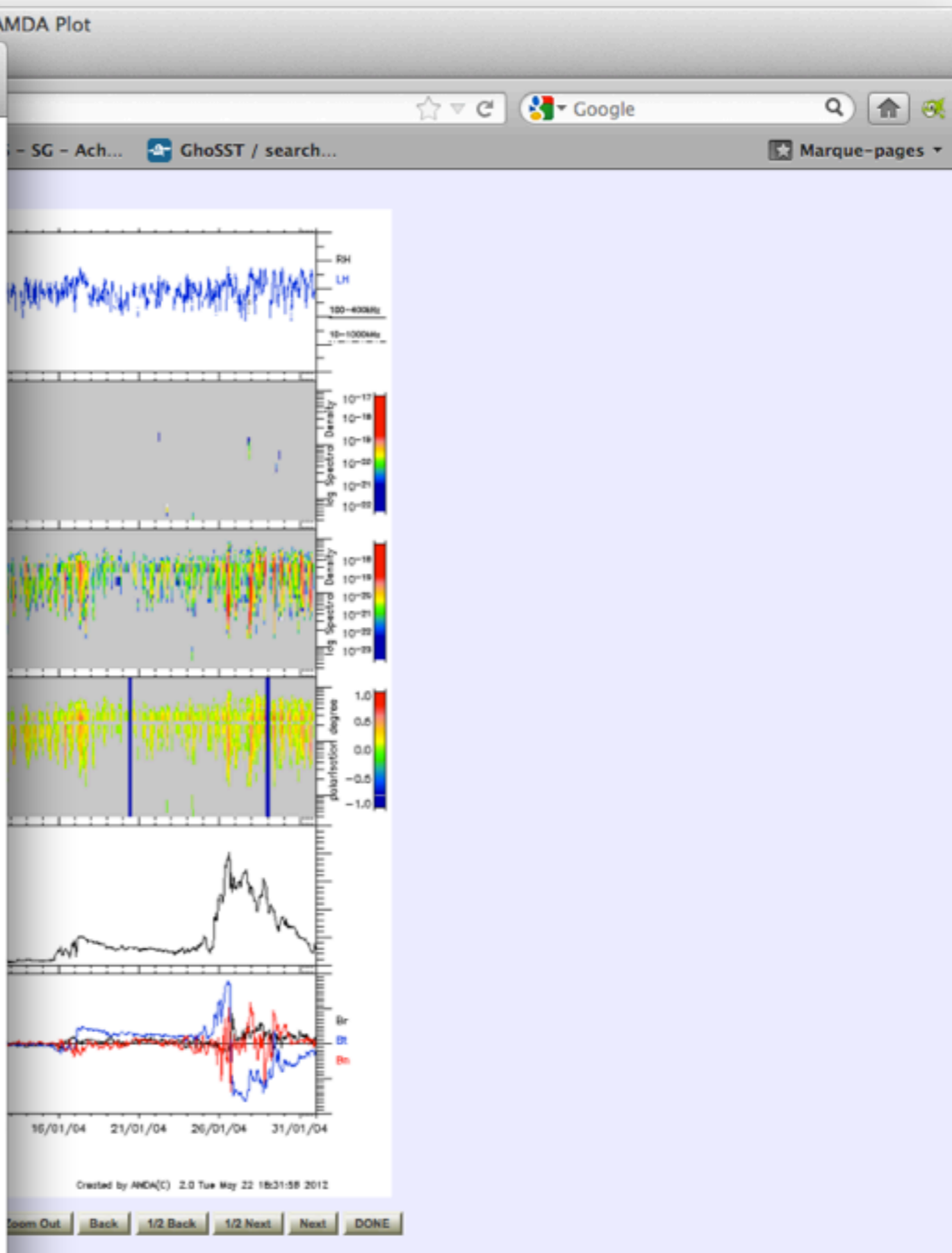
Saturn Jupiter

Delta T

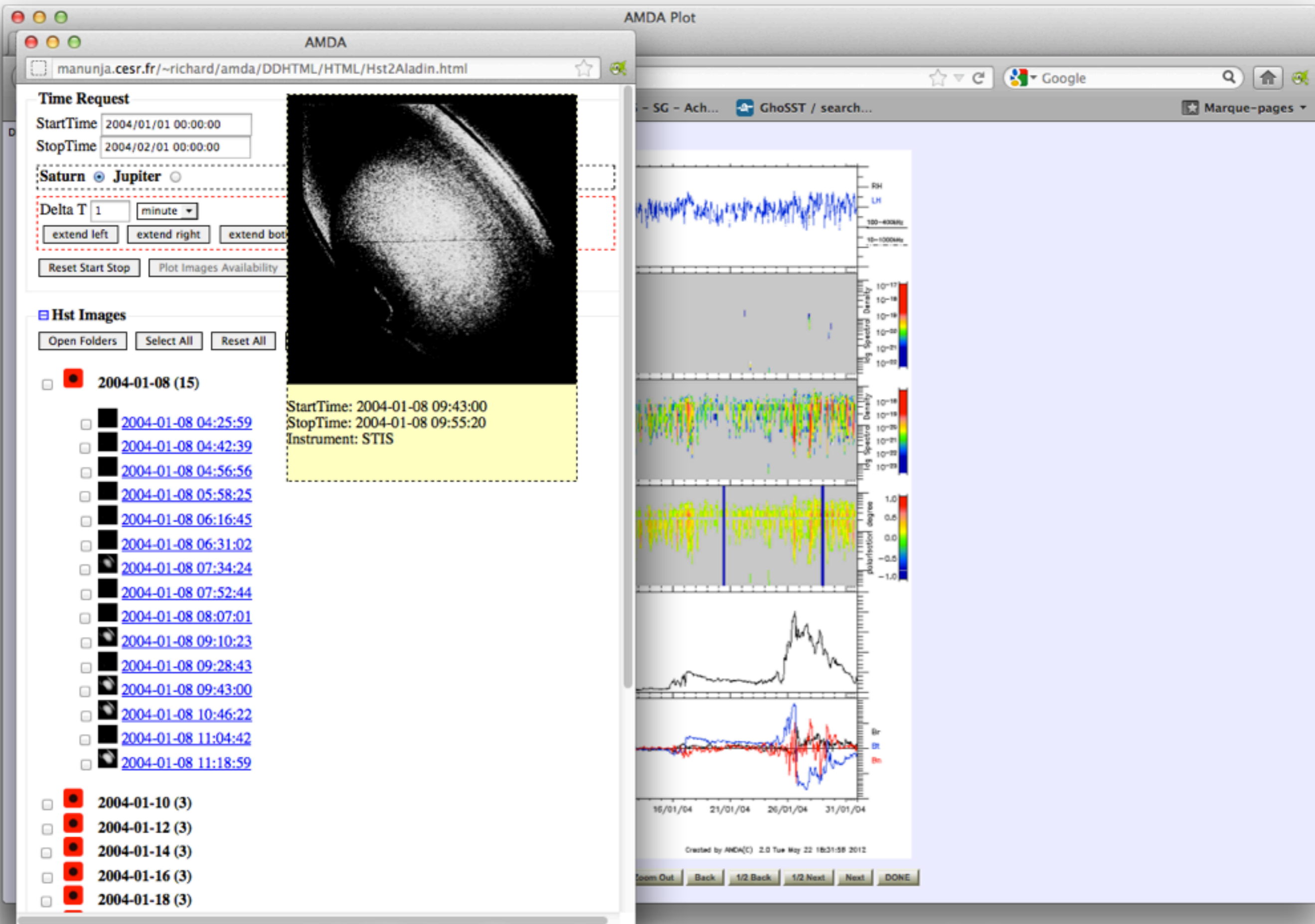
Hst Images

- 2004-01-08 (15)
- 2004-01-10 (3)
- 2004-01-12 (3)
- 2004-01-14 (3)
- 2004-01-16 (3)
- 2004-01-18 (3)
- 2004-01-20 (3)
- 2004-01-21 (3)
- 2004-01-23 (3)
- 2004-01-24 (2)
- 2004-01-25 (1)
- 2004-01-26 (3)
- 2004-01-28 (3)
- 2004-01-30 (3)

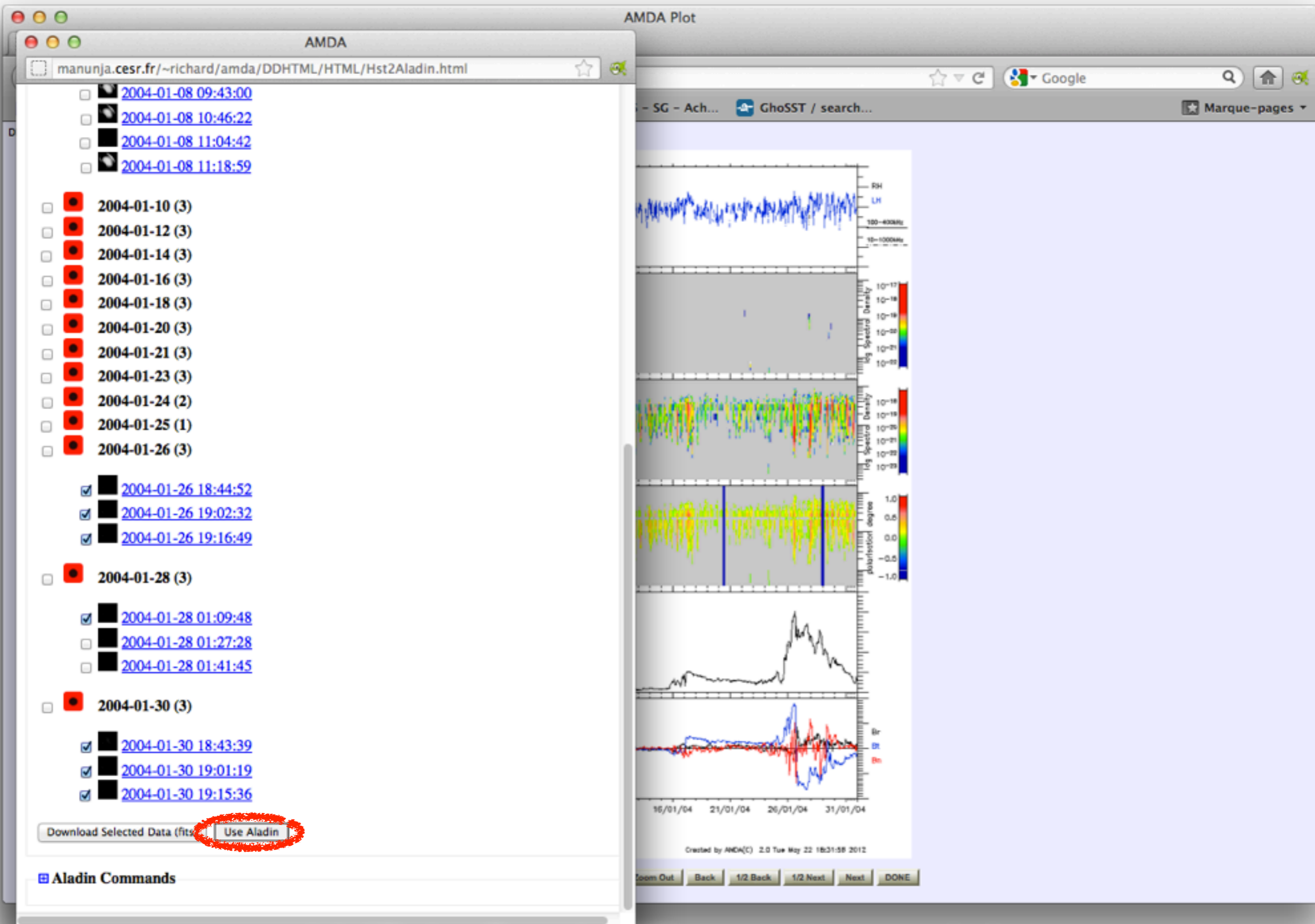
Aladin Commands



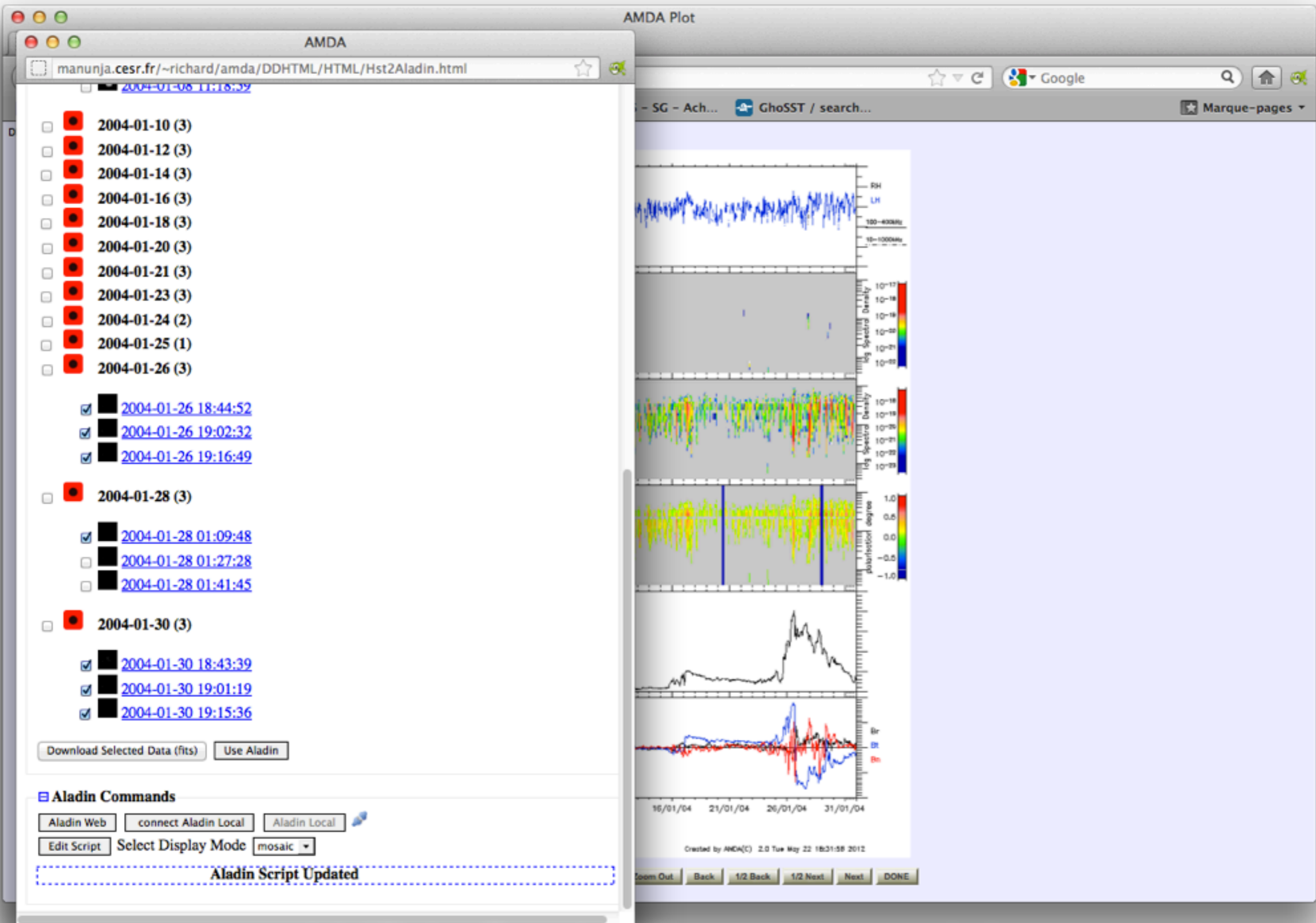
AMDA: Get HST images module



AMDA: Get HST images module



AMDA: Get HST images module



AMDA: Get HST images module

AMDA

manunja.cesr.fr/~richard/amda/DDHTML/HTML/Hst2Aladin.html

2004-01-08 11:18:39

- 2004-01-10 (3)
- 2004-01-12 (3)
- 2004-01-14 (3)
- 2004-01-16 (3)
- 2004-01-18 (3)
- 2004-01-20 (3)
- 2004-01-21 (3)
- 2004-01-23 (3)
- 2004-01-24 (2)
- 2004-01-25 (1)
- 2004-01-26 (3)
 - [2004-01-26 18:44:52](#)
 - [2004-01-26 19:02:32](#)
 - [2004-01-26 19:16:49](#)
- 2004-01-28 (3)
 - [2004-01-28 01:09:48](#)
 - [2004-01-28 01:27:28](#)
 - [2004-01-28 01:41:45](#)
- 2004-01-30 (3)
 - [2004-01-30 18:43:39](#)
 - [2004-01-30 19:01:19](#)
 - [2004-01-30 19:15:36](#)

Download Selected Data (fits) Use Aladin

Aladin Commands

Aladin Web disconnect Aladin **Aladin Local**

Edit Script Select Display Mode mosaic

Aladin Script Updated

Aladin v7.0


Position Effacer Référentiel ICRS

Aladin Sky Atlas - v7.0

ALADIN est un atlas du ciel interactif, et de visualiser des images digitalisées de n'importe quel objet du ciel, d'y superposer des objets issus de catalogues existants, et, interactivement, d'accéder aux informations relatives.

Démarrage rapide...

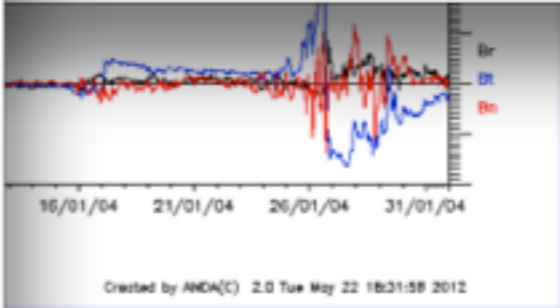
Entrez simplement votre cible dans le champ de saisie ci-dessus.
(ex: M1 ou 13:29:53 +47:11:48)



Aladin est développé par Pierre Fernique, Thomas Boch, François Bonnarel et Anaïs Oberto.
CDS/CNRS - by CDS - Distributed under GNU GPL v3

Chercher 1x

distributed under GNU GPL v3 0 sel / 0 src OMo



Created by AMDA(C) 2.0 Tue May 22 18:31:58 2012

Zoom Out Back 1/2 Back 1/2 Next Next DONE

AMDA: Get HST images module

AMDA

manunja.cesr.fr/~richard/amda/DDHTML/HTML/Hst2Aladin.html

2004-01-08 11:18:39

- 2004-01-10 (3)
- 2004-01-12 (3)
- 2004-01-14 (3)
- 2004-01-16 (3)
- 2004-01-18 (3)
- 2004-01-20 (3)
- 2004-01-21 (3)
- 2004-01-23 (3)
- 2004-01-24 (2)
- 2004-01-25 (1)
- 2004-01-26 (3)
 - 2004-01-26 18:44:52
 - 2004-01-26 19:02:32
 - 2004-01-26 19:16:49
- 2004-01-28 (3)
 - 2004-01-28 01:09:48
 - 2004-01-28 01:27:28
 - 2004-01-28 01:41:45
- 2004-01-30 (3)
 - 2004-01-30 18:43:39
 - 2004-01-30 19:01:19
 - 2004-01-30 19:15:36

Download Selected Data (fits) Use Aladin

Aladin Commands

Aladin Web disconnect Aladin Aladin Local

Edit Script Select Display Mode mosaic

Aladin Script Updated

Aladin v7.0

Position Effacer Référentiel ICRS

select dépl. zoom dist. phot. dessin marq. filtre corr. rvb assoc. coupe

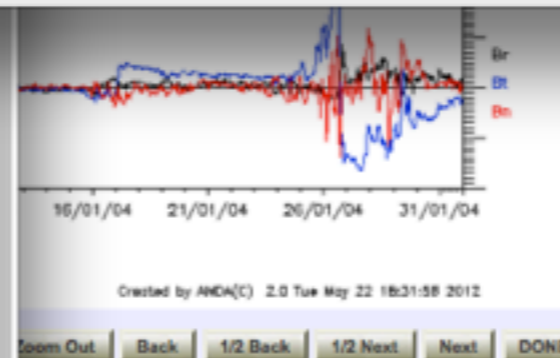
om 1/8x

loupe pixel prop. suppr.

27.22" x 27.22"

[Vue D4] Chercher

(c) 2010 UDS/CNRS - by CDS - Distributed under GNU GPL v3 0 sel / 0 src 40Mo



AMDA: Get HST images module

Aladin v7.0

Position Effacer Référentiel ICRS

AMDA

manunja.cesr.fr/~richard/amda/DDHTML/HTML/Hst2Aladin.html

2004-01-08 11:18:39

- 2004-01-10 (3)
- 2004-01-12 (3)
- 2004-01-14 (3)
- 2004-01-16 (3)
- 2004-01-18 (3)
- 2004-01-20 (3)
- 2004-01-21 (3)
- 2004-01-23 (3)
- 2004-01-24 (2)
- 2004-01-25 (1)
- 2004-01-26 (3)
 - [2004-01-26 18:44:52](#)
 - [2004-01-26 19:02:32](#)
 - [2004-01-26 19:16:49](#)
- 2004-01-28 (3)
 - [2004-01-28 01:09:48](#)
 - [2004-01-28 01:27:28](#)
 - [2004-01-28 01:41:45](#)
- 2004-01-30 (3)
 - [2004-01-30 18:43:39](#)
 - [2004-01-30 19:01:19](#)
 - [2004-01-30 19:15:36](#)

Download Selected Data (fits) Use Aladin

Aladin Commands

Aladin Web disconnect Aladin Aladin Local

Edit Script Select Display Mode

Aladin updated

mosaic
mosaic
movie
diff

2004_01_26_18_44_52 2004_01_26_18_44_52 2004_01_26_19_02_32

2004_01_28_01_09_48 2004_01_30_18_43_39 2004_01_30_19_01_19

select
dépl.
zoom
dist
phot
dessin
marq
filtre
corr.
rvb
assoc
coupe
om 1/8x
loupe
pixel
prop
suppr

[Vue D4] Chercher

tributed under GNU GPL v3 0 sel / 0 src 40Mo

Created by AMDA(C) 2.0 Tue May 22 16:31:58 2012

Zoom Out Back 1/2 Back 1/2 Next Next DONE

AMDA: Get HST images module

Aladin v7.0

Position Effacer Référentiel ICRS

AMDA

manunja.cesr.fr/~richard/amda/DDHTML/HTML/Hst2Aladin.html

2004-01-08 11:18:39

- 2004-01-10 (3)
- 2004-01-12 (3)
- 2004-01-14 (3)
- 2004-01-16 (3)
- 2004-01-18 (3)
- 2004-01-20 (3)
- 2004-01-21 (3)
- 2004-01-23 (3)
- 2004-01-24 (2)
- 2004-01-25 (1)
- 2004-01-26 (3)
 - 2004-01-26 18:44:52
 - 2004-01-26 19:02:32
 - 2004-01-26 19:16:49
- 2004-01-28 (3)
 - 2004-01-28 01:09:48
 - 2004-01-28 01:27:28
 - 2004-01-28 01:41:45
- 2004-01-30 (3)
 - 2004-01-30 18:43:39
 - 2004-01-30 19:01:19
 - 2004-01-30 19:15:36

Download Selected Data (fits) Use Aladin

Aladin Commands

Aladin Web disconnect Aladin **Aladin Local**

Edit Script Select Display Mode movie

Aladin Script Updated

2004_01_26_18_44_52 2004_01_26_18_44_52 2004_01_26_19_02_32

2004_01_28_01_09_48 2004_01_30_18_43_39 2004_01_30_19_01_19

2004_01_30_19_15_36

select dépl. zoom dist phot dessin marq filtre corr. rvb assoc coupe

om 1/8x

loupe pixel prop suppr

27.22" x 27.22"

[Vue D4] Chercher

tributed under GNU GPL v3 0 sel / 0 src 40Mo

Created by AMDA(C) 2.0 Tue May 22 18:31:58 2012

Zoom Out Back 1/2 Back 1/2 Next Next DONE

AMDA: Get HST images module

AMDA

manunja.cesr.fr/~richard/amda/DDHTML/HTML/Hst2Aladin.html

2004-01-08 11:18:39

- 2004-01-10 (3)
- 2004-01-12 (3)
- 2004-01-14 (3)
- 2004-01-16 (3)
- 2004-01-18 (3)
- 2004-01-20 (3)
- 2004-01-21 (3)
- 2004-01-23 (3)
- 2004-01-24 (2)
- 2004-01-25 (1)
- 2004-01-26 (3)
 - [2004-01-26 18:44:52](#)
 - [2004-01-26 19:02:32](#)
 - [2004-01-26 19:16:49](#)
- 2004-01-28 (3)
 - [2004-01-28 01:09:48](#)
 - [2004-01-28 01:27:28](#)
 - [2004-01-28 01:41:45](#)
- 2004-01-30 (3)
 - [2004-01-30 18:43:39](#)
 - [2004-01-30 19:01:19](#)
 - [2004-01-30 19:15:36](#)

Download Selected Data (fits) Use Aladin

Aladin Commands

Aladin Web disconnect Aladin Aladin Local

Edit Script Select Display Mode movie

Aladin Script Updated

Aladin v7.0

Position Effacer Référentiel ICRS

2004_01_26_19_02_32

5"

31.13" x 28.95"

grille nord multivues unit.

Chercher

(c) 2010 UDS/CNRS - by CDS - Distributed under GNU GPL v3

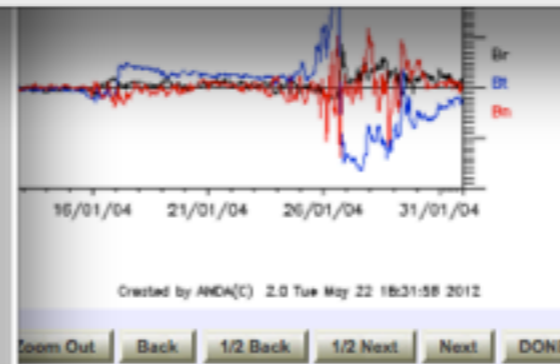
0 sel / 0 src 28Mo

select
depl.
zoom
dist
phot
dessin
marq
filtre
corr.
rvb
assoc
coupe
cont
loupe
pixel
prop
suppr

Blk img
2004_01_30_19_01_19
2004_01_30_18_43_39
2004_01_30_19_15_36
2004_01_28_01_09_48
2004_01_26_19_02_32
2004_01_26_19_16_49

om 1/2x

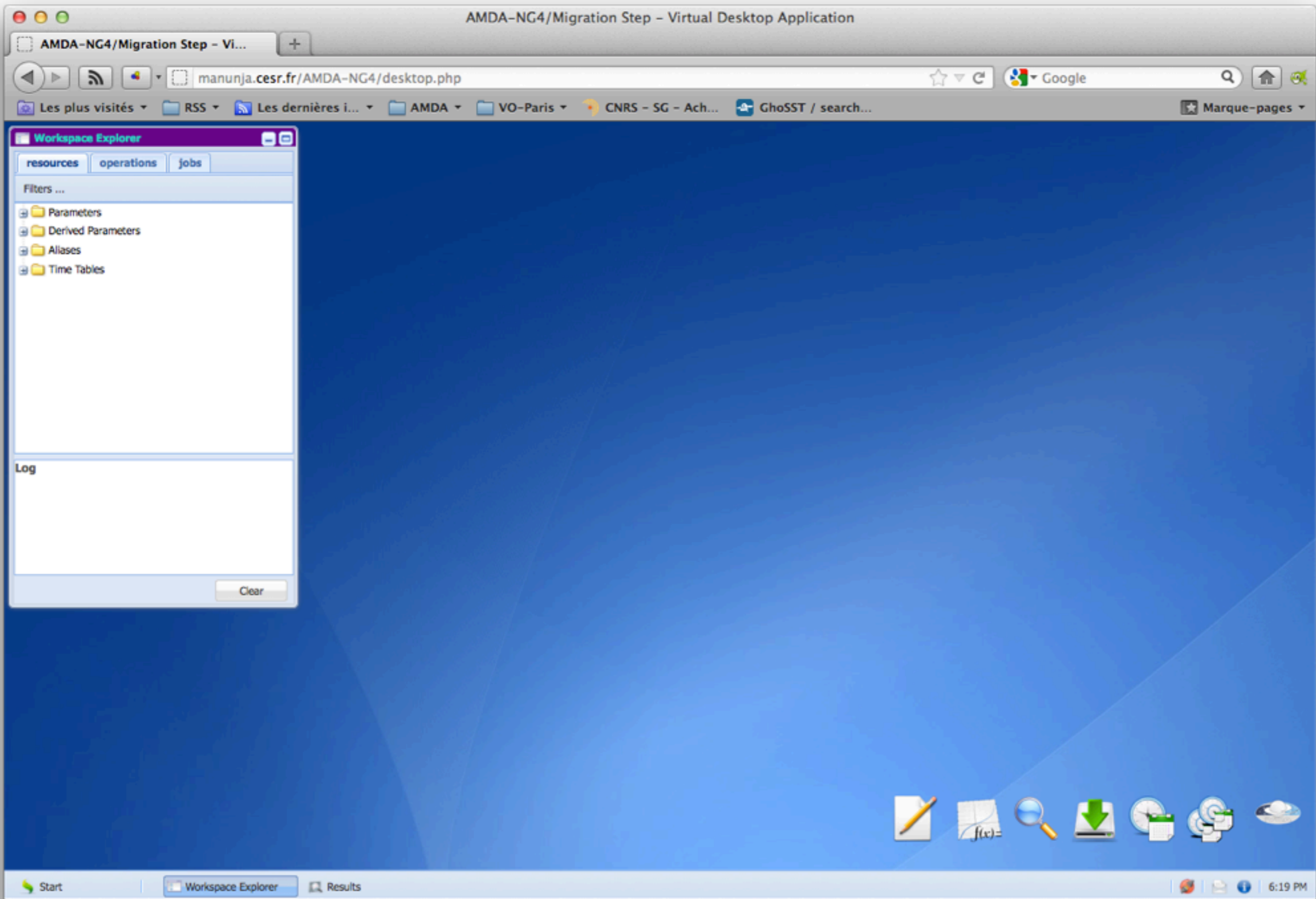
27.22" x 27.22"



AMDA: Get HST images module

Connecting AMDA with TOPCAT

- New version: AMDA-NG under development!
- For the same science case, send the magnetic field data time series to TOPCAT.
- VOTable output added to download module (including units, ucd... for each field)



AMDA-NG: Desktop

AMDA-NG4/Migration Step - Virtual Desktop Application

manunja.cesr.fr/AMDA-NG4/desktop.php

Workspace Explorer

- resources
- operations
- jobs

Filters ...

- Parameters
 - Local Data
 - ARTEMIS-P1
 - ARTEMIS-P2
 - Cassini_Public
 - ephemeris
 - RPWS
 - MAG
 - RTN_1min
 - RTN_1sec
 - b_mag**
 - KSM_1min

Log

Clear

Plot

Plot 1 Plot 2 Plot 3 Plot 4 Plot 5

Add Panel Remove Panel

Name	Panel Properties								Parameter Arguments	Y2
	Plot Type	Height	Width	Xmin	Xmax	Ymin	Ymax	Additional		
Panel 1	TIME	0.4	1	0	0	0	0	select...		
cass_b_rtn1s										<input type="checkbox"/>
Panel 2	TIME	0.4	1	0	0	0	0	select...		
cass_bmag_rt...										<input type="checkbox"/>

Time Selection

Time Table Interval

Start Time: 2004/01/01 00:00:00

Stop Time: 2004/01/11 00:00:00

Duration: Days: 0010 Hrs: 00 Mins: 00 Secs: 00

Plot Title:

Char Size:

Orientation: LANDSCAPE

Description:

Plot File Name:

Line Thickness:

File Format: PNG

Request Name:

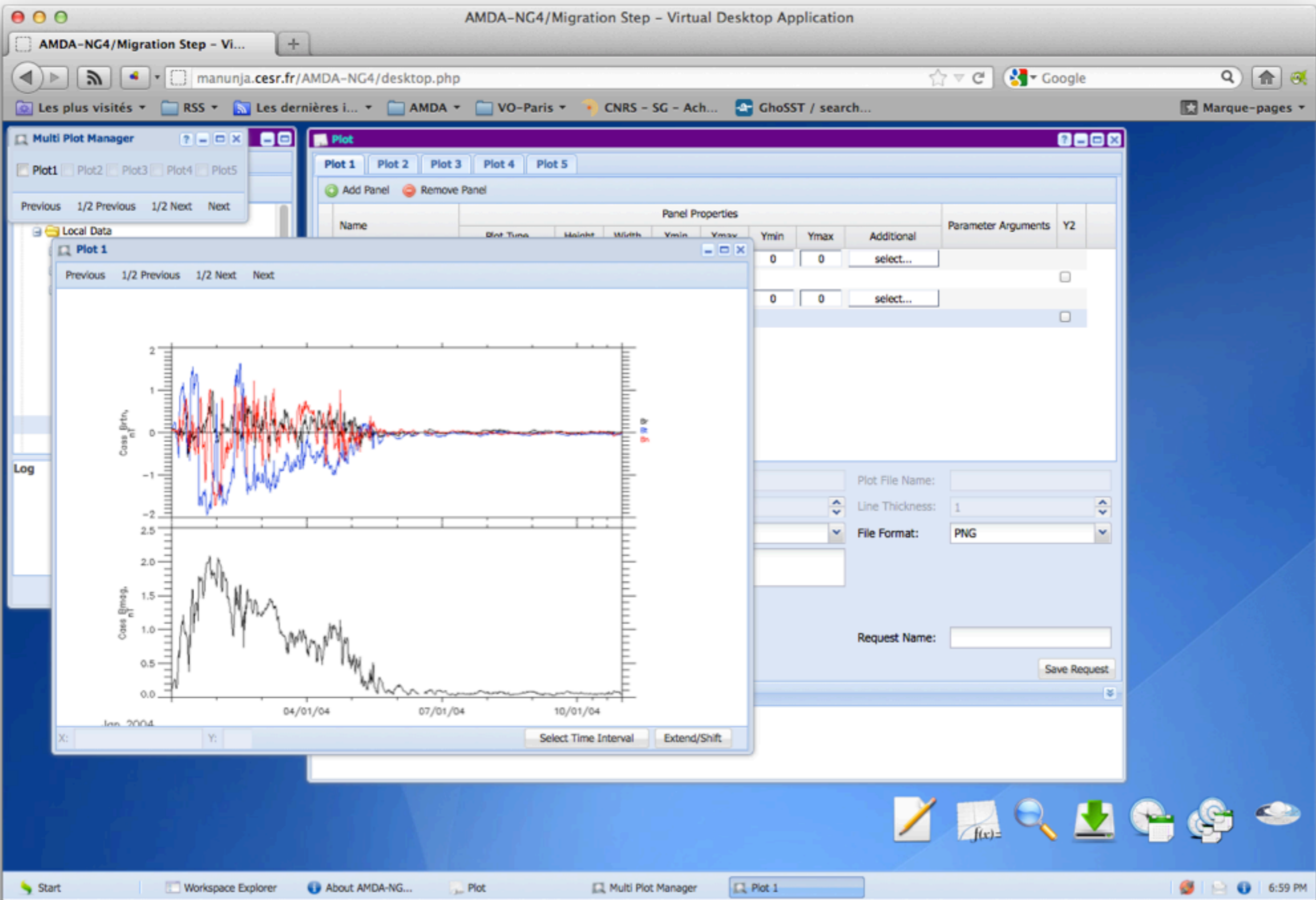
Plot Get Data Reset Save Request

Information

This is info zone...

Start Workspace Explorer About AMDA-NG... Plot 6:59 PM

AMDA-NG: Plot module



AMDA-NG: Plot Result

AMDA-NG4/Migration Step - Virtual Desktop Application

manunja.cesr.fr/AMDA-NG4/desktop.php

Multi Plot Manager

Plot

Download data

Get Data Get Time Table

Request Name:

Parameter Name	
1 cass_b_rtn1s	✘
2 cass_bmag_rtn1s	✘

Time Format: YYYY-MM-DDThh:mm:ss

File Structure: One File Per Param/Interval

Sampling Time: 600

File Name:

Header:

File Format: ASCII

Compression: tar+gzip

Time Selection

Time Table Interval

Start Time: 2004/01/01 00:00:00

Stop Time: 2004/01/11 00:00:00

Days: Hrs: Mins: Secs:

Duration: 0010 00 00 00

Download Reset

Information

This is info zone...

Plot 1

Cass β rt_{n1}

Cass β mag_{n1}

Jan. 2004

X: 2004-01-11T00:00:00

Plot File Name:

Line Thickness: 1

File Format: PNG

Request Name:

Save Request

Start Workspace Explorer About AMDA-NG... Plot Multi Plot Manager Plot 1 Download data 7:00 PM

AMDA-NG: Download module

AMDA-NG4/Migration Step - Virtual Desktop Application

manunja.cesr.fr/AMDA-NG4/desktop.php

Multi Plot Manager

Plot

Download data

Get Data Get Time Table

Request Name:

Parameter Name	
1 cass_b_rtn1s	✘
2 cass_bmag_rtn1s	✘

Time Format: YYYY-MM-DDThh:mm:ss

File Structure: All In One File

Sampling Time: 600

File Name:

Header:

File Format: ASCII

Compression: tar+gzip

Time Selection

Time Table Interval

Start Time: 2004/01/01 00:00:00

Stop Time: 2004/01/11 00:00:00

Days: Hrs: Mins: Secs:

Duration: 0010 00 00 00

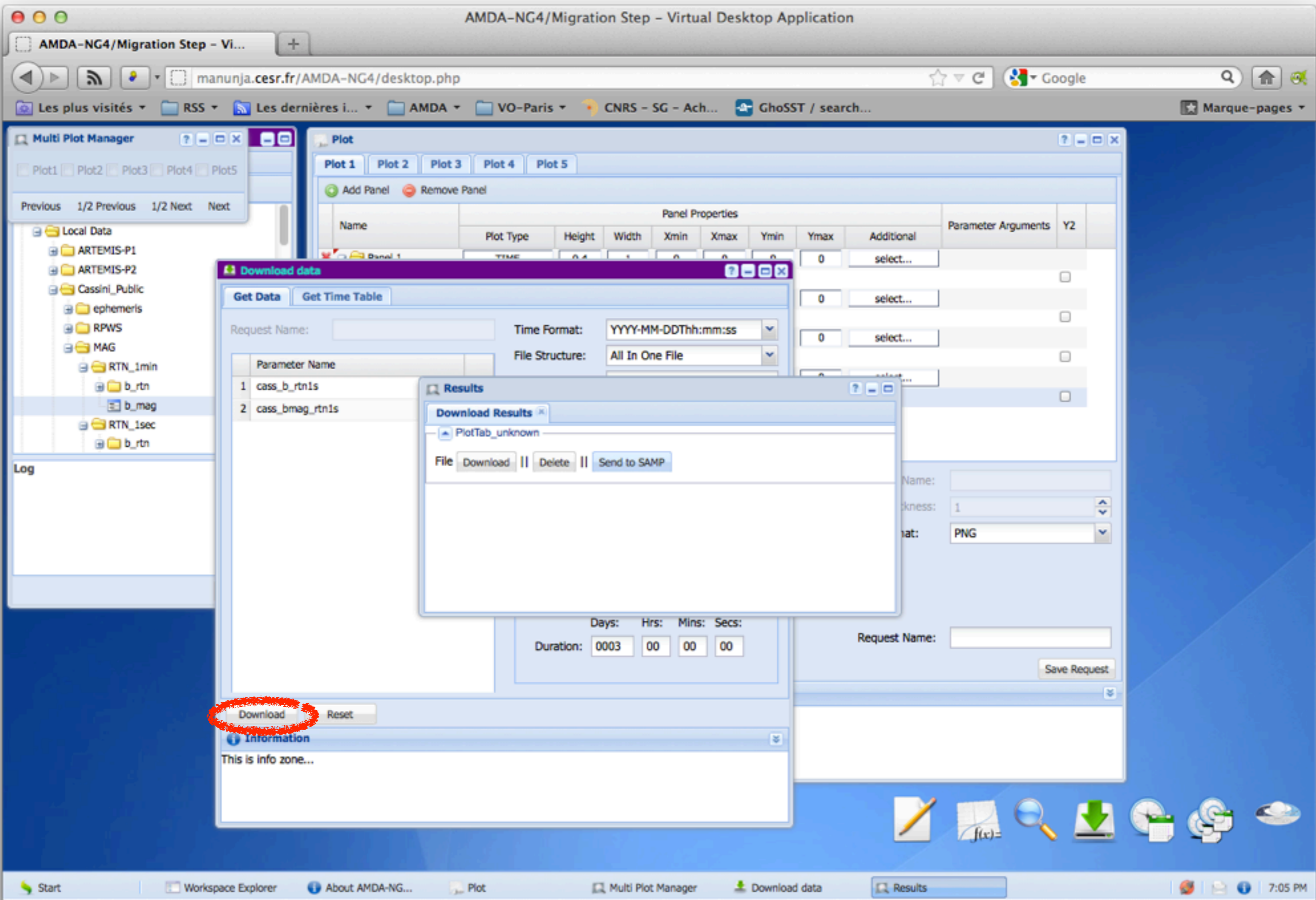
Download Reset

Information

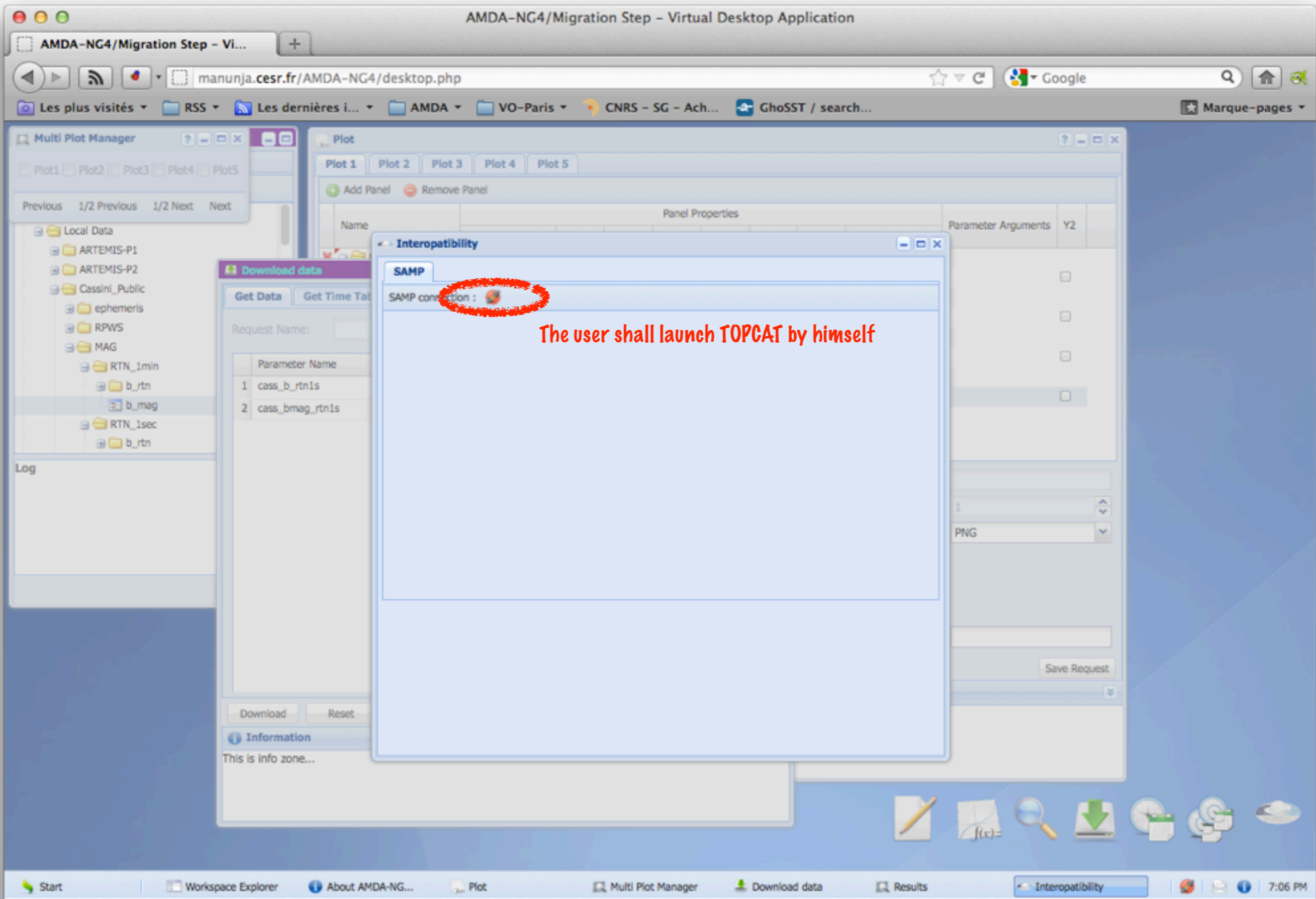
This is info zone...

Start Workspace Explorer About AMDA-NG... Plot Multi Plot Manager Plot 1 Download data 7:00 PM

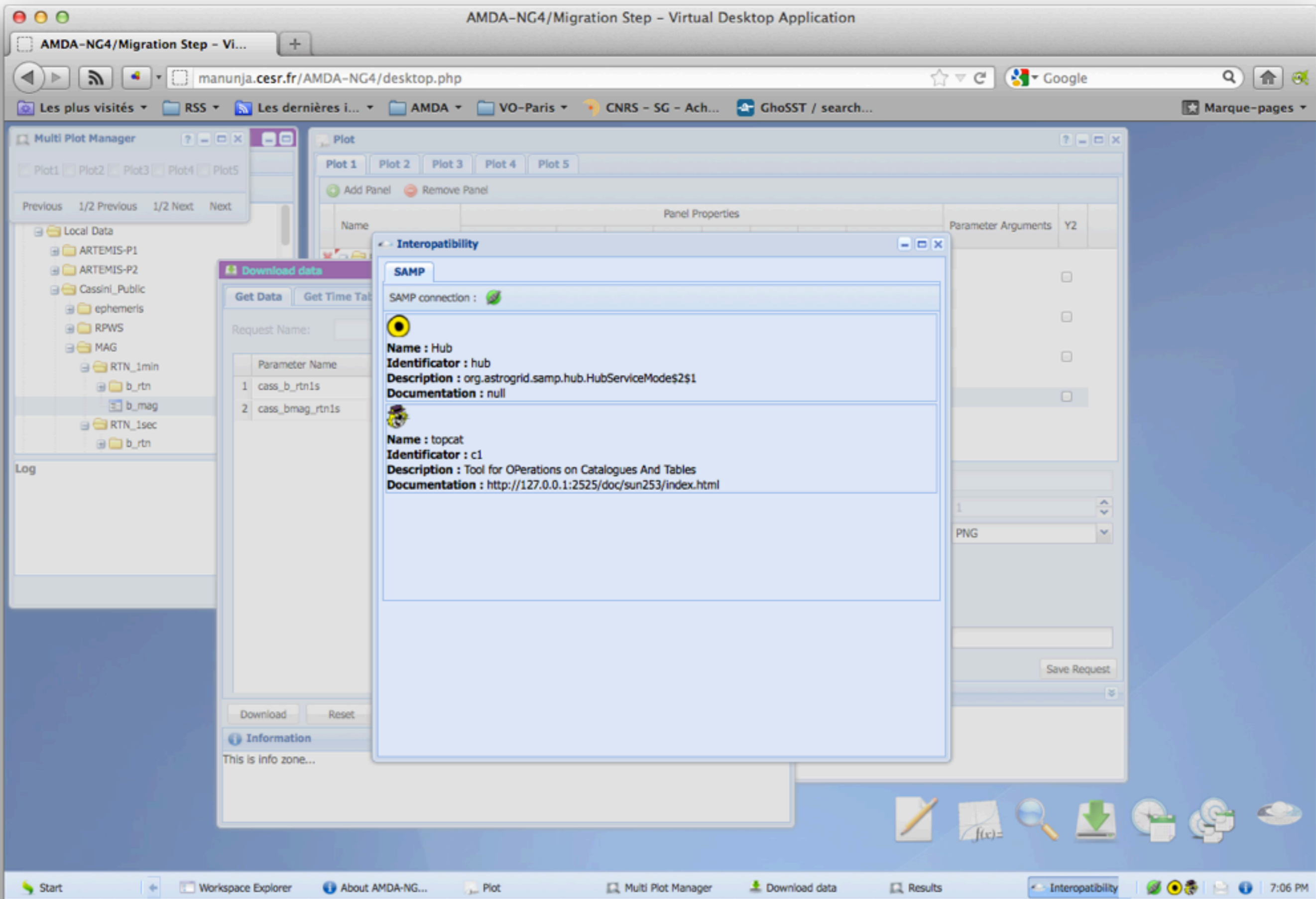
AMDA-NG: Download module



AMDA-NG: Download result module



AMDA-NG: Interoperability module



AMDA-NG: Interoperability module

AMDA-NG4/Migration Step - Virtual Desktop Application

manunja.cesr.fr/AMDA-NG4/desktop.php

Multi Plot Manager

Plot

Download data

Results

Download Results

PlotTab_unknown

File Download || Delete **Send to SAMP**

Duration: Days: 0003 Hrs: 00 Mins: 00 Secs: 00

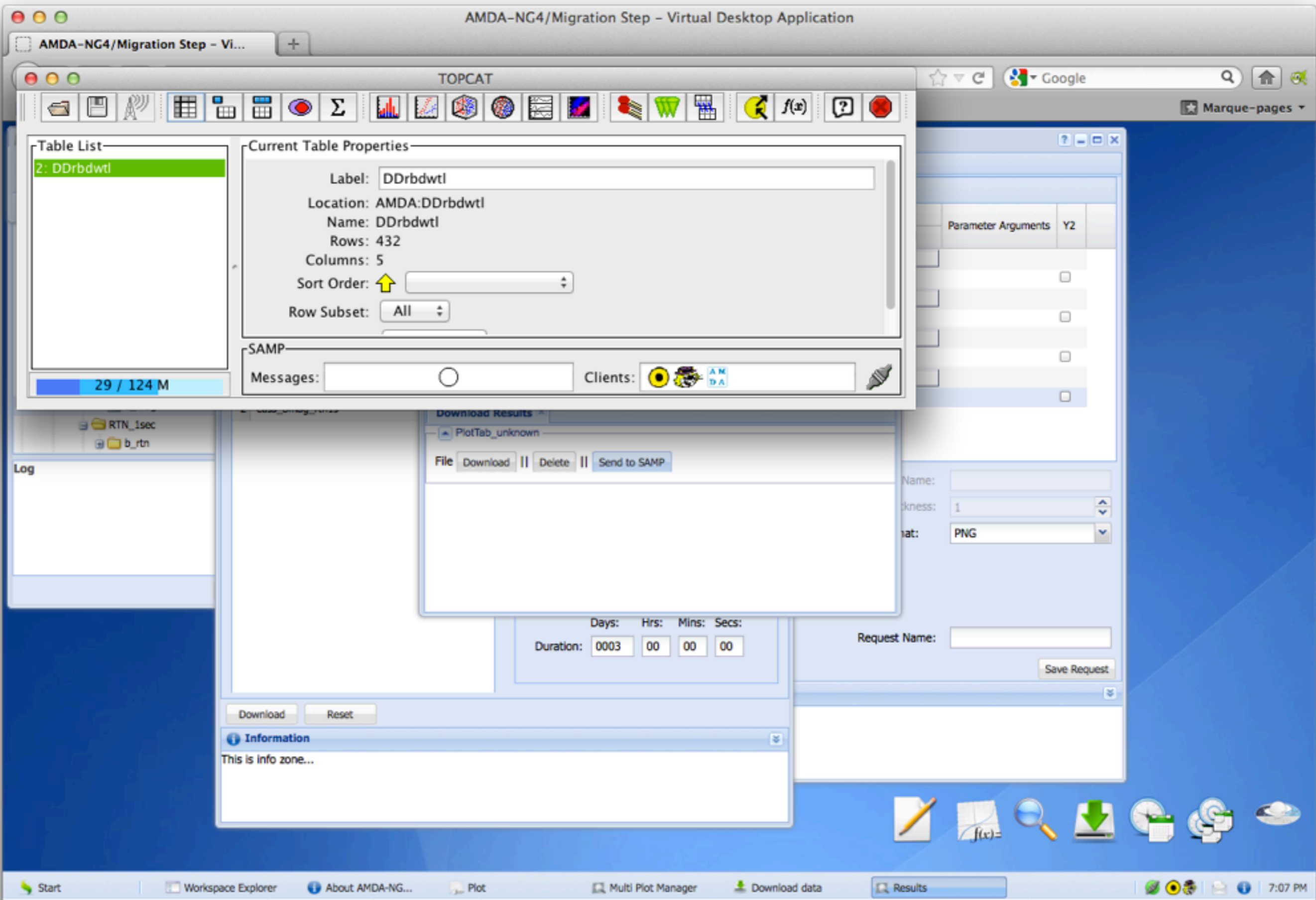
Request Name: [] Save Request

Information

This is info zone...

Start | Workspace Explorer | About AMDA-NG... | Plot | Multi Plot Manager | Download data | Results | 7:07 PM

AMDA-NG: Download result module



TOPCAT

Table Browser for 2: DDrbdwtl

	Time	Br	Bt	Bn	cass_bmag_r...
1	2004-01-01T00:05:00.000Z	0,039643	0,160248	0,058482	0,175987
2	2004-01-01T00:15:00.000Z	0,043092	0,153753	0,045742	0,167077
3	2004-01-01T00:25:00.000Z	0,040552	0,078458	0,045943	0,104715
4	2004-01-01T00:35:00.000Z	0,066292	0,109443	0,081978	0,154082
5	2004-01-01T00:45:00.000Z	0,089442	0,149097	0,075178	0,190718
6	2004-01-01T00:55:00.000Z	0,088263	0,154012	0,037208	0,183873
7	2004-01-01T01:05:00.000Z	0,100365	0,183995	0,063928	0,22038
8	2004-01-01T01:15:00.000Z	0,0766	0,218015	0,071345	0,243187
9	2004-01-01T01:25:00.000Z	0,120952	0,204703	0,077992	0,256175
10	2004-01-01T01:35:00.000Z	0,083743	0,24076	0,056023	0,262025
11	2004-01-01T01:45:00.000Z	0,070725	0,24739	0,013605	0,260407
12	2004-01-01T01:55:00.000Z	0,103343	0,22754	0,047523	0,25618
13	2004-01-01T02:05:00.000Z	0,08677	0,217878	0,069467	0,245963
14	2004-01-01T02:15:00.000Z	0,06487	0,142245	0,038295	0,166335
15	2004-01-01T02:25:00.000Z	-0,008183	-0,075873	0,028315	0,106338
16	2004-01-01T02:35:00.000Z	0,003288	-0,12925	0,045808	0,141478

Days: Hrs: Mins: Secs:
Duration: 0003 00 00 00

Request Name:

Save Request

Download Reset

Information

This is info zone...

TOPCAT

AMDA-NG4/Migration Step - Virtual Desktop Application

AMDA-NG4/Migration Step - Vi...

TOPCAT

Google

Marque-pages

Table List

Current Table Properties

TOPCAT(2): Table Browser

TOPCAT(2): Table Columns

Table Columns for 2: DDrbdwtl

Visible	Name	SID	Class	Description	UCD	Datatype	Decoder	VOTable ID	xtype
<input type="checkbox"/>	Index	\$0	Long	Table row index					
<input checked="" type="checkbox"/>	Time	\$1	String	Time	time.epoch	char	ISO-8601->Decimal year	Time	dateTime
<input checked="" type="checkbox"/>	Br	\$2	Float	Cass Brtn - Unit : nT		float		cass_b_rtnls_0	
<input checked="" type="checkbox"/>	Bt	\$3	Float	Cass Brtn - Unit : nT		float		cass_b_rtnls_1	
<input checked="" type="checkbox"/>	Bn	\$4	Float	Cass Brtn - Unit : nT		float		cass_b_rtnls_2	
<input checked="" type="checkbox"/>	cass_bmag_rtnls	\$5	Float	Cass Bmag - Unit : nT		float		cass_bmag_rtnls	

12 2004-01-01T01:55:00.000Z 0,103343 0,22754 0,047523 0,25618

13 2004-01-01T02:05:00.000Z 0,08677 0,217878 0,069467 0,245963

14 2004-01-01T02:15:00.000Z 0,06487 0,142245 0,038295 0,166335

15 2004-01-01T02:25:00.000Z -0,008183 -0,075873 0,028315 0,106338

16 2004-01-01T02:35:00.000Z 0,003288 -0,12925 0,045808 0,141478

Duration: Days: Hrs: Mins: Secs: 0003 00 00 00

Request Name:

Save Request

Download Reset

Information
This is info zone...

Start Workspace Explorer About AMDA-NG... Plot Multi Plot Manager Download data Results 7:07 PM

TOPCAT

AMDA-NG4/Migration Step - Vi...

TOPCAT

Table List

- 2: DDrbdwtl

Current Table Properties

Label: DDrbdwtl
Location: AMDA:DDrbdwtl
Name: DDrbdwtl
Rows: 432
Columns: 5
Sort Order:
Row Subset: All

SAMP

Messages: Client

29 / 124 M

RTN_1sec
b_rtn

Log

Download Results

PlotTab_unknown

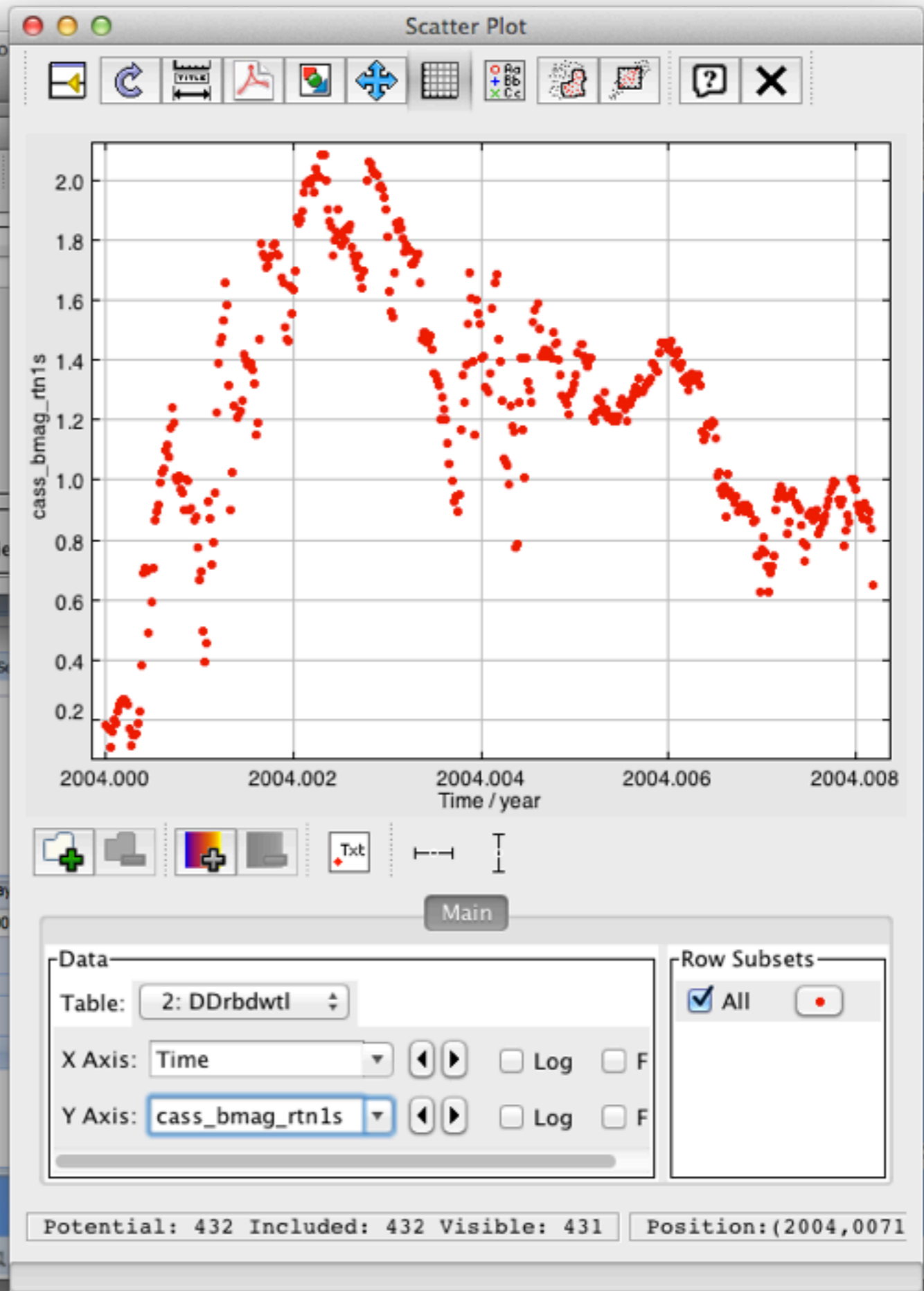
File Download || Delete || S...

Duration: 00

Download Reset

Information
This is info zone...

Start Workspace Explorer About AMDA-NG... Plot



TOPCAT

AMDA-NG4/Migration Step - Vi...

TOPCAT

Table List

- 2: DDrbdwtl

Current Table Properties

Label: DDrbdwtl
 Location: AMDA:DDrbdwtl
 Name: DDrbdwtl
 Rows: 432
 Columns: 5
 Sort Order:
 Row Subset: All

SAMP

Messages: Clients:

29 / 124 M

Log

RTN_1sec
b_rtn

Download Results

PlotTab_unknown

File Download || Delete || Send

Days:
 Duration: 0003

Download Reset

Information
 This is info zone...

Start | Workspace Explorer | About AMDA-NG... | Plot

3D

Main

Data

Table: 2: DDrbdwtl

X Axis: Br Log Flip

Y Axis: Bt Log Flip

Z Axis: Bn Log Flip

Row Subsets

All

Potential: 432 Included: 432 Visible: 431

TOPCAT