

SIA2 2D prototype

F.Bonnarel (CDS),

Development supported
by the EuroVO-AIDA
project

2 Methods

- Query Method
 - New response (with utypes and ucds, consistent with ObsTap Utypes but more extended, Mapping (WCS) section
 - More QUERY PARAMETERS : TIME, POL, BAND + Optionnal = (ASTCALIB, FLUXLIMIT, SPATRES, SPECRES,)
- Access Data Method (New!!!)
 - Cutouts in angular or pixel dimension (cfitsio syntax for the latter)
 - Transforms (resampling)

- DEMO

Server selector

Others File all VO FOV SExtractor

Image servers

- Aladin images
- SkyView
- Sloan
- MAST
- CADC
- AcDatSIA2
- AlalA2
- SWarp
- DSS...
- VLA...
- Others...

Catalog servers

- All Vizier
- Surveys
- Missions
- VIMBAD
- NED
- SkyBot
- Others..

Experimental SIA2 Aladin Server

Target: NGC 6946 [Grab coord]

SIZE: 0.0deg

COLLECTION: ALL

BAND: ALL

TIME: 1.0 100000.0

POL: ALL

FORMAT: image/fits

- Creator: 2MASS
 - Collection: H
 - 2MASS_H_991128W_HI0300256
 - Collection: J
 - 2MASS_J_991128W_JI0300256
 - Collection: K
 - 2MASS_K_991128W_KI0300256
- Creator: POSSI
 - Collection: E-DSS1
 - POSSI_E-DSS1_106 0.0" x 0.0"
 - Collection: E-LOW-DSS1
 - POSSI_E-LOW-DSS1_106

Reset Clear Help SUBMIT Close

New interface box to the SIAV2 Aladin 2D prototype

New mandatory query parameters COLLECTION, BAND, TIME, POL

select

pan

zoom

dist

draw

tag

text

filter

cross

rgb

assoc

cont

mgls

pixel

prop

del

Zoom 1x



Display

2MASS_H_991128N_HI0300256

Field name	UCD	UType	Value
DataLength		sia:Dataset.Length	4000000
Title	meta.title;meta.dataset	sia:DataID.Title	2MASS_H_991128N_HI0300256
Creator		sia:DataID.Creator	2MASS
Collection		sia:DataID.Collection	H
CollectionType		sia:DataID.Collection.Type	atlas
CreatorDID	meta.id	sia:DataID.CreatorDID	ivo://cds/2MASS/H#1234567896
CreatorDate	time;meta.dataset	sia:DataID.Date	28/11/1999
SpaceFrameName		sia:CoordSys.SpaceFrame.Name	FK5
SpaceFrameEquinox	time.equinox;pos.frame	sia:CoordSys.SpaceFrame.Equinox	2000.0y
TimeFrameName	time.scale	sia:CoordSys.TimeFrame.Name	TT
SpatialLocation	pos.eq	sia:Char.SpatialAxis.Coverage.Location.Value	20:34:37.35+60:12:42.4
SpatialExtent	instr.fov	sia:Char.SpatialAxis.Coverage.Bounds.Extent	5.0°
SpatialCalibration	meta.code.qual	sia:Char.SpatialAxis.Accuracy.Calibration	Calibrated
SpatialResolution	pos.resolution	sia:Char.SpatialAxis.Resolution	2.0"
TimeLocation	time.epoch	sia:Char.TimeAxis.Coverage.Location.Value	51510.2d
SpectralAxisUcd		sia:Char.SpectralAxis.Ucd	em;wl
SpectralLocation	instr.bandpass	sia:Char.SpectralAxis.Coverage.Location.Value	1.7um
SpectralStart	em;stat.min	sia:Char.SpectralAxis.Coverage.Bounds.Start	1.6um
SpectralStop	em;stat.max	sia:Char.SpectralAxis.Coverage.Bounds.Stop	1.8um
SpectralCalibration	meta.code.qual	sia:Char.SpectralAxis.Accuracy.Calibration	UNCALIBRATEDm
MappingSpatialProjection		sia:Mapping.Spatial.Projection	TAN
MappingSpatialCrvl		sia:Mapping.Spatial.Crvl	256.500000 512.500000
MappingSpatialCrpix		sia:Mapping.Spatial.Crpix	308.655620 60.211775
MappingSpatialCdMatrix		sia:Mapping.Spatial.cdMatrix	-0.000278 0.000000 0.000000 0.000278

Stick FoV in stack LOAD Close

MAST POL ALL
 CADC FORMAT image/fits

AcDatSIA2
 AlalA2
 SWarp
 DSS...
 VLA...

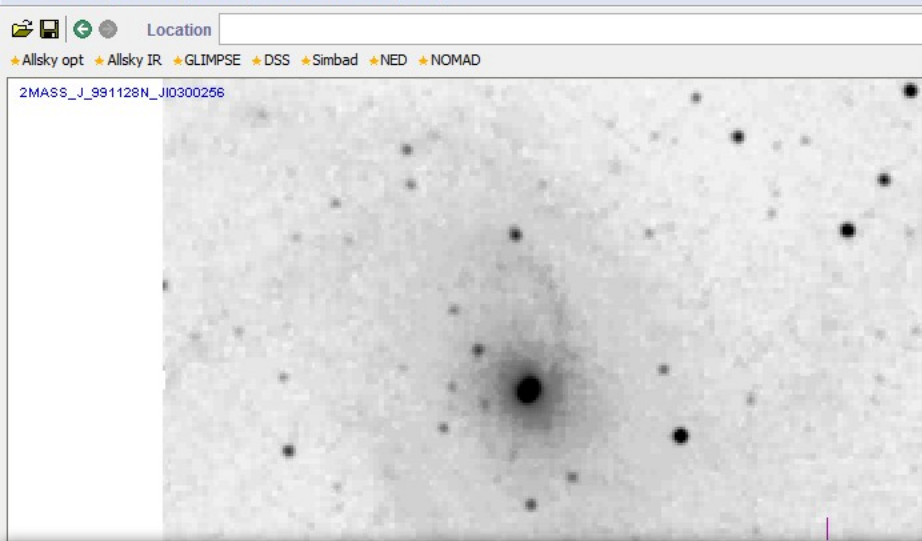
Creator: 2MASS
 Collection: H
 2MASS_H_991128N_HI0300256
 Collection: J
 2MASS_J_991128N_JI0300256
 Collection: K
 2MASS_K_991128N_KI0300256
 Creator: POSSI
 Collection: E-DSS1
 POSSI_E-DSS1_106 0.0" x 0.0"
 Collection: E-LOW-DSS1

IMBAD
 NED
 SkyBot
 Others..

Obs DM consistent utypes

Mapping (WCS) section

0 sel / 0 sro 19Mb
 22:57
 20/05/2010



Server selector

Others

Image servers

- Aladin images
- SkyView
- Sloan
- MAST
- CADC
- AcDatSIA2

Catalog servers

- All VizieR
- Surveys
- Missions
- Simbad
- NED
- SkyBot
- Others..

Experimental SIA2 Aladin Server

Target: NGC 6946

SIZE: 0.0deg

COLLECTION: ALL

BAND: ALL

TIME: 51500 51600

POL: ALL

FORMAT: image/fits

Creator: 2MASS

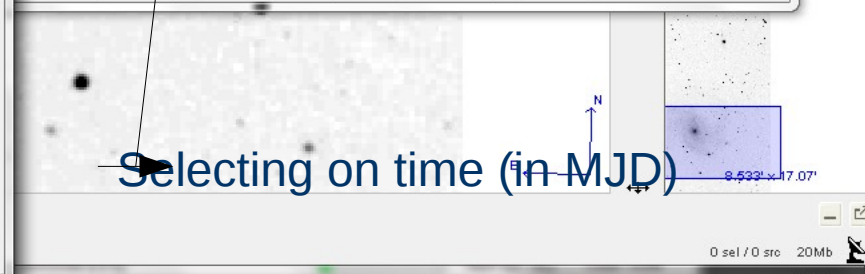
- Collection: H
 - 2MASS_H_991128N_HI0300256**
- Collection: J
 - 2MASS_J_991128N_JI0300256
- Collection: K
 - 2MASS_K_991128N_KI0300256 0.0" x 0.0"

Data Info Frame

Display

2MASS_H_991128N_HI0300256

Field name	UCD	UType	Value
Score		sia:Query.Score	1
AssocID		sia:Association.ID	MultiFormat.0
AcRef	meta.ref.url	sia:Access.Reference	http://aladin.u-strasbg.fr/cgi-bin/...
Format		sia:Access.Format	image/fits
DataModel		sia:Dataset.DataModel	SIA2
DataLength		sia:Dataset.Length	4000000
Title	meta.title;meta.dataset	sia:DataID.Title	2MASS_H_991128N_HI0300256
Creator		sia:DataID.Creator	2MASS
Collection		sia:DataID.Collection	H
CollectionType		sia:DataID.Collection.Type	atlas
CreatorDID	meta.id	sia:DataID.CreatorDID	ivo://cds/2MASS/H#1234567896
CreatorDate	time;meta.dataset	sia:DataID.Date	28/11/1999
SpaceFrameName		sia:CoordSys.SpaceFrame.Name	FK5
SpaceFrameEquinox	time.equinox;pos.frame	sia:CoordSys.SpaceFrame.Equinox	2000.0y
TimeFrameName	time.scale	sia:CoordSys.TimeFrame.Name	TT



Aladin v6.0 *** BETA VERSION (based on v6.040) ***

File Edit Image Catalog Overlay Tool View Interop Help

Location ICRSd

★ Allsky opt ★ Allsky IR ★ GLIMPSE ★ DSS ★ Simbad ★ NED ★ NOMAD

2MASS_J_991128N_J10300256

New AccessData Method Interface

AccessData parameters

Server selector

Others File allVO FOV SExtractor

Image servers

- Aladin images
- SkyView
- Sloan
- MAST
- CADP
- AcDatSIA2
- AlalA2
- SWarp
- DSS...
- VLA...
- Others...

SIA2 AccessData Aladin Server

Target..... 308.71608 +60.15333

SIZE..... 0.1 0.1

COLLECTION..... ZMASS

BAND..... J

MODE..... view

CRVAL.....

CRPIX.....

CDMATRIX.....

PROJ.....

CUTOUT.....

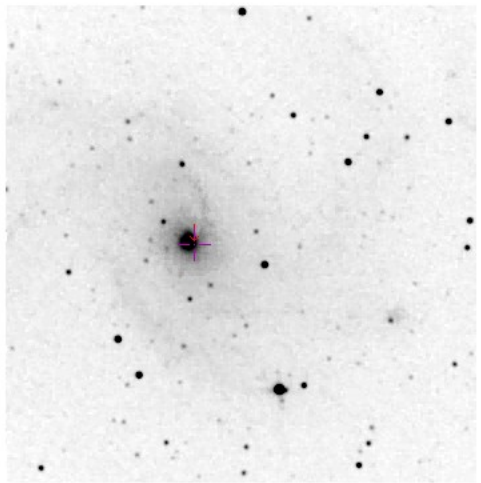
Access parameters in Angular units for a cutout
For Cutout in pixels (cfitiso syntax)

1' 10.25' x 6.9' 8.533' x 17.07'

(c)1999-2010 Uds/CNRS - Centre de Données astronomiques de Strasbourg

0 sel / 0 src 33Mb

FR 23:44 20/05/2010



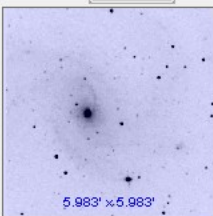
6x6 arcmin cutout

20.5' x 11.8'

select
pan
zoom
dist
draw
faq
text
filter
cross
rgb
assoc
cont
mgls
pixel
prop
del

AISIA2 308.7160
 2MASS_J_9911

Zoom 1x



Aladin v6.0 *** BETA VERSION (based on v6.040) ***

File Edit Image Catalog Overlay Tool View Interop Help

Location XY im...

★ Allsky opt ★ Allsky IR ★ GLIMPSE ★ DSS ★ Simbad ★ NED ★ NOMAD

2MASS_J_991128N_J10300256 AI SIA2 308.7160833333333/60.16333333333333~1

Querying for a resample by forcing output WCS

Server selector

Others File all-VO FOV **SExtractor**

Image servers **SIA2 AccessData Aladin Server** Catalog servers

Target..... 20 34 51.86 +60 09 12.0

SIZE

COLLECTION 2MASS

BAND J

MODE resample

CRVAL 308.7 +60.15

CRPIX 250.0 500.0

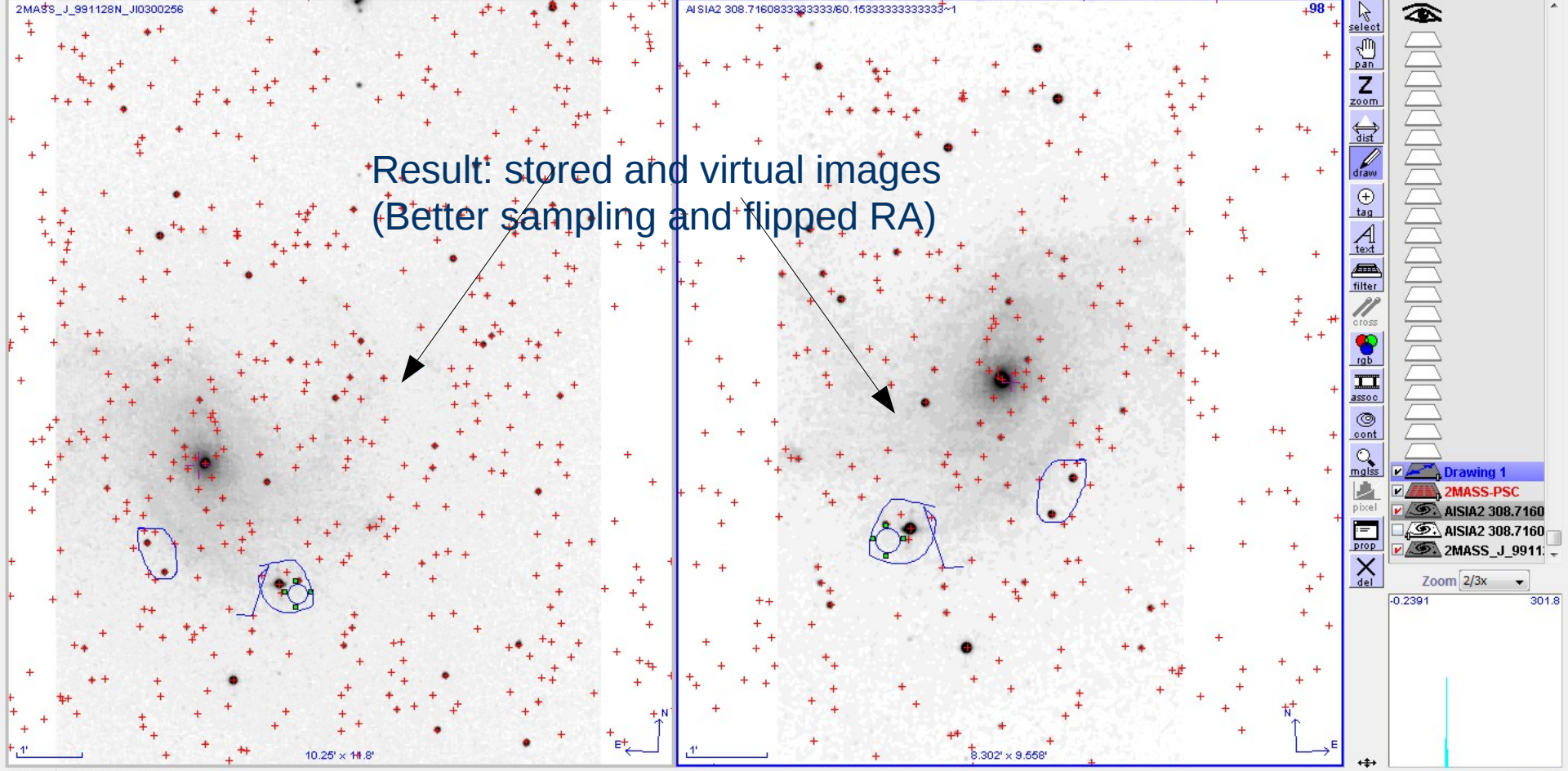
CDMATRIX 0.00015 0.0 0.0 0.00015

PROJ TAN

CUTOUT

0 sel / 0 sro 20Mb

FR 00:14 21/05/2010



Towards 3D + Future

- IN case of 3D data
 - POL, BAND, TIME may drive real Filtering
 - Reduction of axes will be implemented
 - Cutout on 3 axes
- Link of DataAccess with Query response (via ObsID, probably)