



# PLENARY CLOSING SESSION

---

2012 May 25

Theory Interest Group

# Report

## Two sessions:

- Tuesday: mainly discussions/brainstorming that help to review / re-examine / evaluate the SimDAL proposal, its TAP implementation, the various options for TAP\_SCHEMA, etc.
- Wednesday: common DAL/Theory/Registry session that has clarified
  - the efforts to be made
  - the directions that have to be followed.

# Main agreements

- SimDAL (**Simulation Data Access Layer**):
  - Need to use the column 'ucd' in TAP\_SCHEMA in order to store SKOSconcepts
  - Unclear need/no need to have a hierarchical grouping of Parameters
  - Strong interest in Datalink
  - Unclear need/no need to define a SimDALRegExt
  - Need to define the mapping SimDM <> SimDAL Tables/Columns or rules to name columns
  - Need to make queries as “give me all the SimDAL services dealing with 3D radiative transfer of ISM” for discovering the proper services; this cannot be handle at Registry level.
- Vocabularies:
  - Need to register VOcabularies in the Registry of references

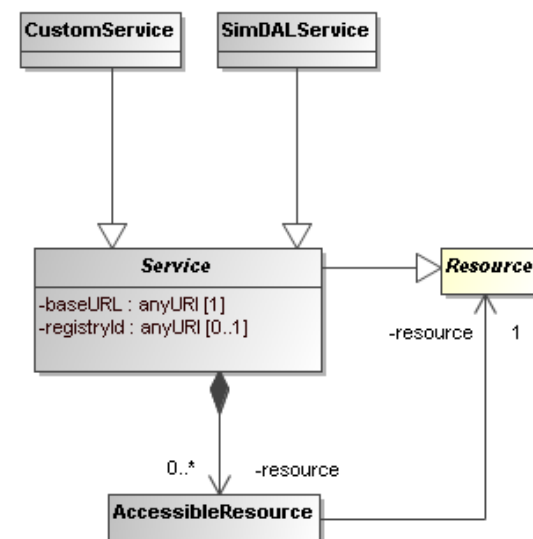
# Impacts on roadmap and other WGs

## • Theory IG

- Need for a DB 'service' containing very detailed informations on simulations (potentially full SimDM instances, TBC)  $\Rightarrow$  **SimDB proposal** to be brought back to life
- Need to make SimDB a standard
- Need to describe the mapping SimDM  $\leftrightarrow$  SimDAL DM  $\Rightarrow$  make explicit the Service class in SimDM  $\Rightarrow$  SimDM 1.1

## • Application WG

- Need to allow for SKOSconcept syntax in VOTable (UCD field): “ / “



# Roadmap

## SimDAL

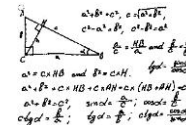
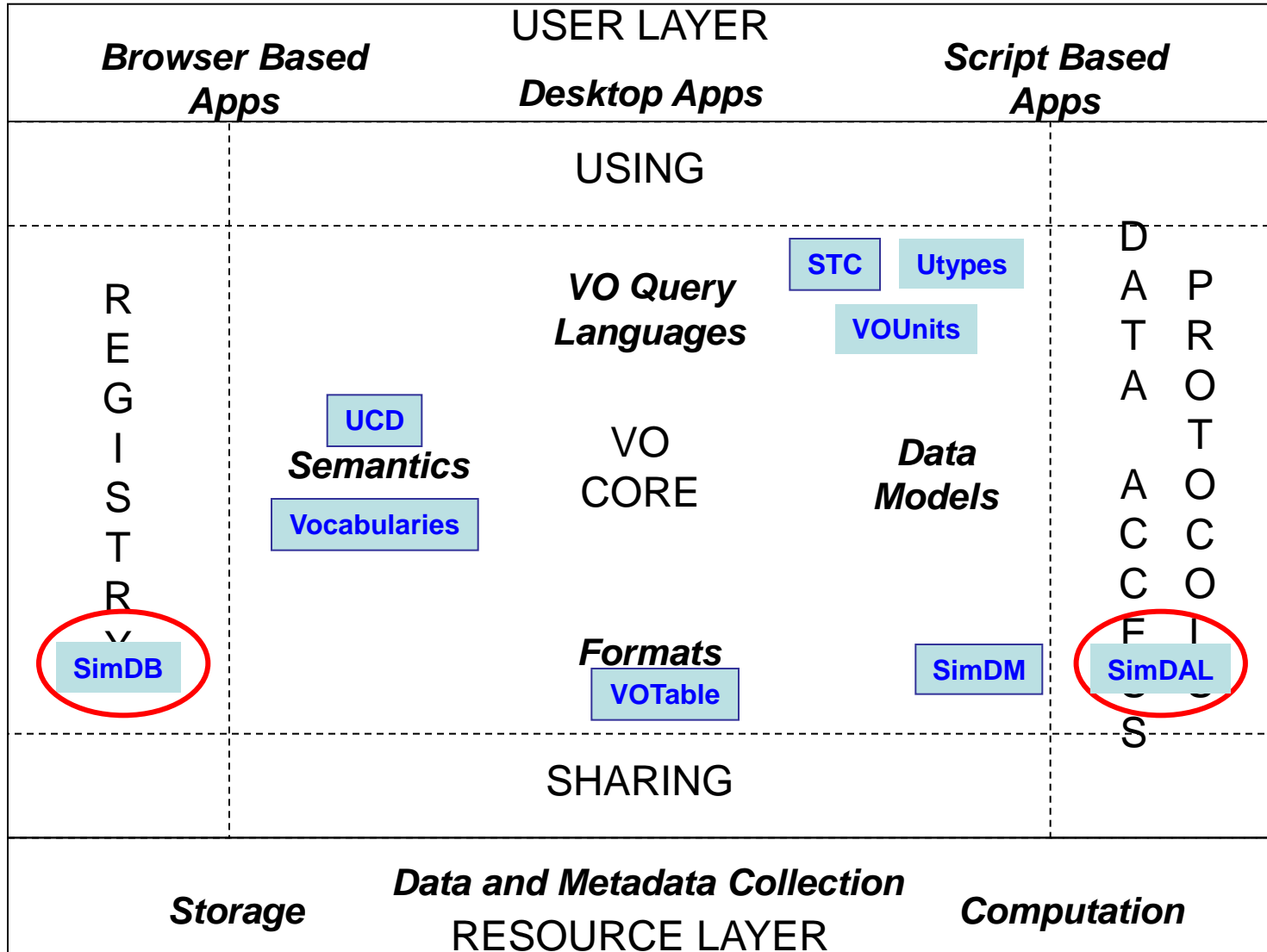
- Led by: F. LePetit
- WD to be ready by next interop
- Test implementations to be modified during summer

## SimDB

- Led by: G. Lemson
- WD to be started, date TBD
- (A note is already available since 2008)
- Current implementations have to be upgraded (all kind of simulations)

## SimDM 1.1

- Lead by: G. Lemson
- Come up with SimDAL



# Why 'Theory' is so complex?

Why 'Theory' is so complex?





**Why 'Theory' is so complex?**



# Why 'Theory' is so complex?



# Why 'Theory' is so complex?



**DANGER  
HIGH VOLTAGE  
13,800 VOLTS**

**MSWG-C  
FED FROM MP02-101A**

