



# Data Model WG Plenary summary

Nara , December 11, 2010

M.Louys, J. Salgado

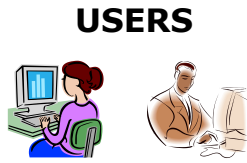


# Observation Data model Core Components

- Finalise working draft before Dec 24 this year
  - Doug , Alberto, Daniel to review and update current draft
- Finalise a Note on Obs/TAP service implementations 15 January 2011
- Estimation of data model uptake (AM)  
( nb of data model fields , use-cases supported)  
Jan 2011 proposed to WG discussion  
Feb 2011 RFC period start  
Mar 2011 TCG RFC

# Photometry metadata in the VO

- Convergence for a general model to support SED builder requirements and photometry services (filter profile, catalog photometry metadata)
  - Agreement for an SED data model that re-uses Spectrum DM 1.2
  - Extension of Spectrum DM in order to cover time series
  - Updates asked for SDM/SSA consistency
- Photometry DM 1.0, WD (JS, editor) 15 Jan 2010
- SED DM 1.0, WD (JMcD, editor) 01 Feb 2010
- Spectrum DM 1.1 minor corrections vs SSA
- Spectrum DM 1.2 , 01 Feb 2011



**COMPUTERS**

**REC**

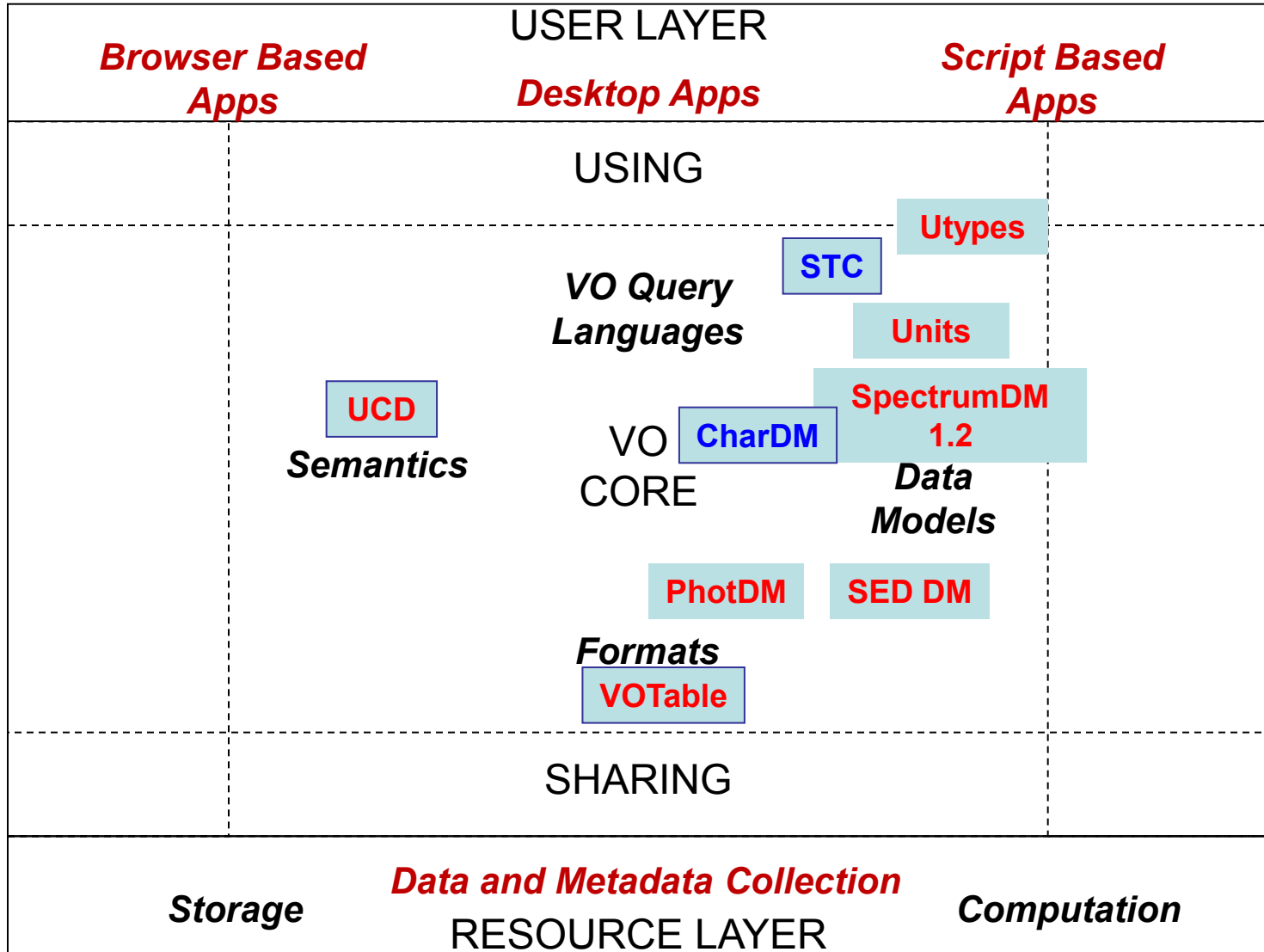
**InProgress**

**REC used**

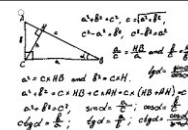
**Std to be updated or created**

R  
E  
G  
I  
S  
T  
R  
Y

D  
A  
T  
A  
A  
C  
C  
E  
S  
S



**PROVIDERS**



# Data model for simulations

- Documents to be reviewed in DM WG
  - IVOA Implementation Note (several reference implementations)
  - On line documentation describing each piece of the model
- Iterations until end of Dec 2010
- start RFC in Jan 2011  
TCG RFC in Feb 2011  
PR in March 2011  
REC in April 2011 (before Napoli Interop) ?

# DM building blocks

- **Utypes** syntax clarified (JMcD,SD, MG, ML)
- Iterations for revision/update of [WD-Utypes-0.4-20091107.pdf](#) to start
- New WD by end of March 2011
- **Units** → general topic moved to the Semantic WG
- Recap of last draft to circulate on interop list
- Comments from all WG required

- **Characterisation 2.0**

- A new WD to be issued before Dec 24, 2010
- Develops the level 4 of Characterisation with sensitivity maps and access to external resources like filter response

- **Polarimetric data**

- feedback for data modeling
- suggestion to data providers /scientists to iterate on a short document for requirements